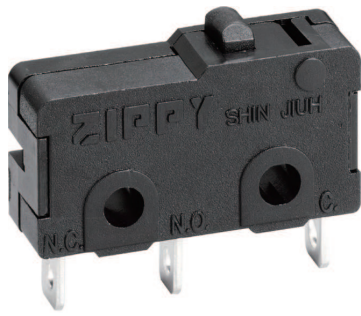


MICRO SWITCHES



SM SERIES

SPECIFICATIONS

Contact Resistance(initial)

Max. 300 mΩ

Measured by ohm meter - open voltage < 1VDC, driver current -100 mA

Insulation Resistance (at 500 VDC / minute)

Min. 100 MΩ

Dielectric Strength

1000 VAC(50~ 60 Hz)

Storage Temperature Range

-25°C to 85°C (with no icing)

Storage Humidity

At 40°C , Max. 85% R.H

Operating Temperature Range

-40°C to 125°C (with no icing)

Vibration

10~55 Hz, displacement 0.75 mm(p-p)

Electrical Service Life

0.1A, - Min. 1,000,000 operations

Other ratings - Min. 6,000 operations

Electrical Operating Frequency

0.1A – 120 operations per minute

Other ratings - 10~30 operations per minute

Mechanical Service Life

Min. 10,000,000 operations

Mechanical Operating Frequency

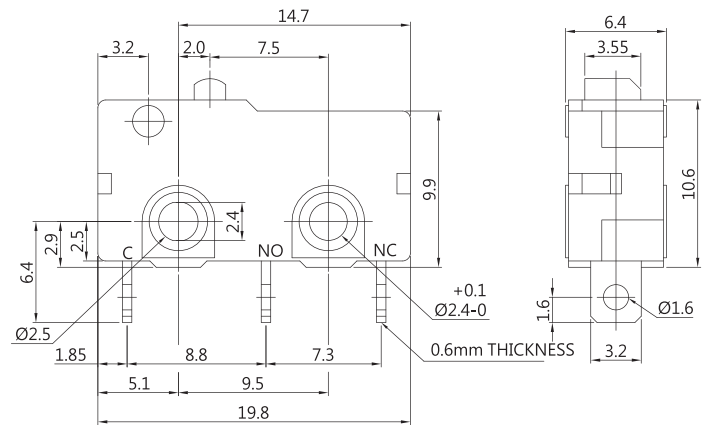
120 operations per minute

APPLICATIONS

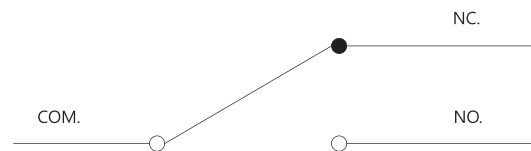
Telephone, Air conditioner, Computer, Humidifier, Alarm, Time recorder, Mixer & Chopper, Solder gun, Neon phone, Fax machine, Joystick, Water pump, Gas detector, Pencil sharpener, Money sorter, Food processor, Electric knife, Toy car, Juicer, Electric steak pan.

DIMENSIONS

Unless otherwise specified, a tolerance of ±0.4mm applies to all dimensions.



CONTACT CONFIGURATION



CERTIFICATE INFORMATION

Model Name	UL	CSA	ENEC14
SM-P1 SM-G1	0.1A 125/250VAC/30VDC (Temp:120°C) Min. 10,000 operations	0.1A 125/250VAC/30VDC Min. 6,000 operation	Non
SM-G5	5A 125/250VAC (Temp:120°C) Min. 10,000 operations	5A 125/250VAC/30VDC Min. 6,000 operations	Non
SM-05	5A 125/250VAC (Temp:120°C) Min. 10,000 operations	5A 125/250VAC/30VDC Min. 6,000 operations	5A 125/250 VAC , μ40T125 1E4 (Only for H, Q,T force)
SM-10	10.1A 125/250VAC Min. 6,000 operations 5A 125/250VAC (Temp:120°C) Min. 100,000 operations	Non	Non

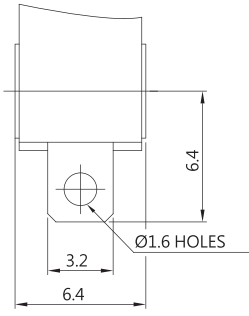
THE SELECTION OF RATING & FORCE

MODEL	Rating	D	L	S	H	Q	T
SM	0.1A	*	*	*	*	*	*
	5A		*	*	*	*	*
	10.1A				*	*	*

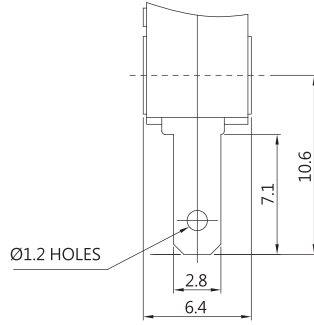
NOTE : The Symbol " * " to represent the result is accepted

TERMINAL TYPES (The thickness of each terminal is 0.6)

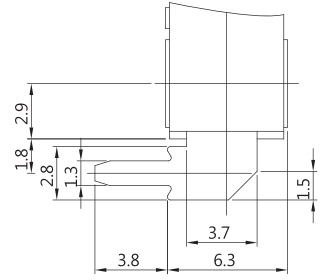
A TYPE



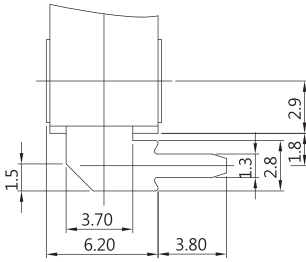
B TYPE



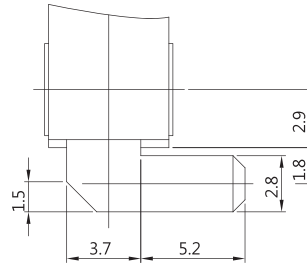
C TYPE



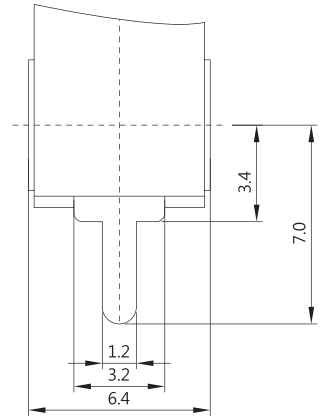
D TYPE



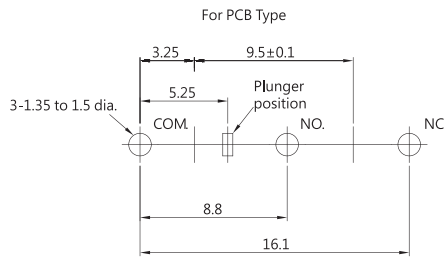
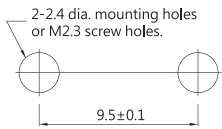
E TYPE



P TYPE



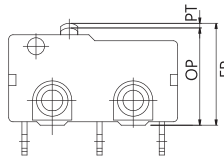
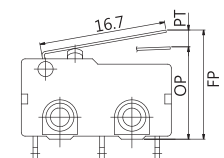
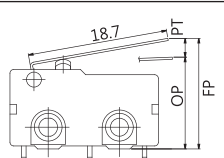
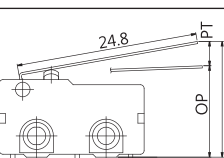
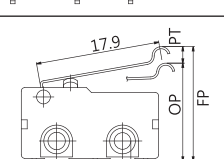
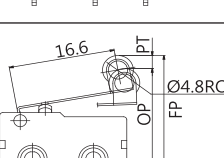
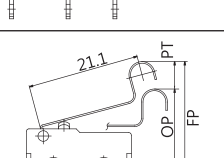
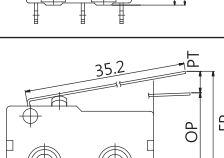
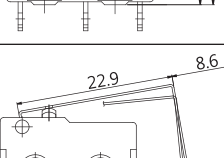
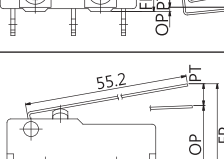
MOUNTING HOLES



ORDERING INFORMATION

S	M	0	5	S	0	3	P	0	Z							
SERIES PREFIX	CODE	RATING CURRENT		CODE	OPERATING FORCE		CODE	ACTUATOR TYPE		CODE	TERMINAL TYPE		CODE	CIRCUIT ARRANGEMENT		ROHS CODE
	P1	0.1A 30VDC 0.1A 125/250VAC		T	MAX HEAVIER		00			A			0	S.P.D.T.		
	05	5A 125/250VAC		Q	HEAVIER		01			B			1	S.P.S.T. NO		
	10	10.1A 125/250VAC		H	HEAVY		02			C			2	S.P.S.T. NC		
				S	STANDARD		03			D						
				L	LIGHT		04			E						
				D	SLIGHT		05			P						
							06									
							07									
							08									
							09									

OPERATING CHARACTERISTICS

SWITCH TYPE	PART SUFFIX	OF Max. (gf)		OP (mm)	PT Max. (mm)	OT Min. (mm)	MD Max. (mm)	FP Max. (mm)	RF Min. (gf)
		H	S						
SM-□□□-00□□-Z		H	249	11.4±0.3	1.1	0.4	0.2	12.2	50
		S	146						35
		L	104						20
SM-□□□-01□□-Z		H	66	11.8±0.8	3.6	0.6	0.8	14.6	9
		S	40						6
		L	30						3
SM-□□□-02□□-Z		H	58	11.8±0.9	4.0	0.6	0.8	14.9	9
		S	36						6
		L	25						6
SM-□□□-03□□-Z		H	45	11.8±1.5	6.1	0.8	1.5	16.4	6
		S	28						4
		L	20						5
SM-□□□-04□□-Z		H	56	13.7±1.0	4.6	0.8	0.8	17.3	13
		S	34						8
		L	25						5
SM-□□□-05□□-Z		H	60	17.5±0.8	3.8	0.8	0.8	20.5	15
		S	35						8
		L	25						6
SM-□□□-06□□-Z		H	48	19.0±1.5	5.7	1.0	1.0	23.2	10
		S	28						6
		L	20						4
SM-□□□-07□□-Z		H	30	11.8±2.0	8.6	1.5	1.8	18.4	7
		S	20						4
		L	15						2
SM-□□□-08□□-Z		H	30	-2.3±3.0	6.0	1.0	1.9	5.4	3
		S	20						4
		L	15						2
SM-□□□-09□□-Z		H	18	11.8±3.0	13.3	1.0	2.9	22.1	4
		S	12						2.5
		L	8						1.5