

SEALED POLYCARBONATE AND ABS ENCLOSURES WITH MOUNTING FLANGE



PRODUCT INFORMATION

- The lid and base incorporate a tongue and groove sealing system with a EPDM gasket.
- Wall mounting holes and lid fixing screws are outside the sealing area thus preventing the ingress of moisture and dust.
- Designed to IP65 of IEC 529 (Dust and Hoseproof).
- Bosses on internal base allow fixing of PCB's horizontally or connection of terminals with M3X4mm self-tapping screws.
- Internal guide slots for mounting PCB assemblies vertically.
- Available with clear or light grey lids.



G256MF



G258CMF



G366MF

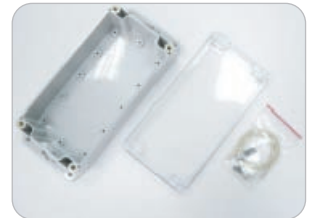
PC

(G2XXMF)
(G2XXCMF)

- Material: Polycarbonate (UL94-HB)
- Moulded in: Light Grey.
- Operating temperature: -40°C to 120°C.
- Clear lid is available on request.
- Mounting flange is designed on the bottom of the base, so the base can be mounted with pan head type of screws on the wall easily.
**Detailed screw size please refer the product drawing.



G256MF



G258CMF



G366MF

ABS

(G3XXMF)

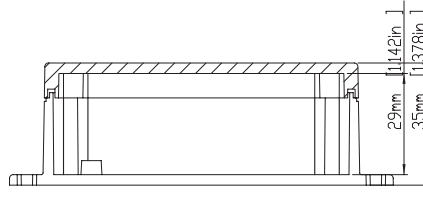
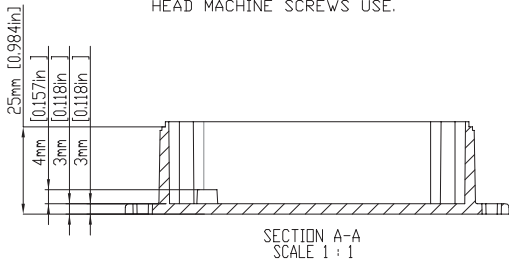
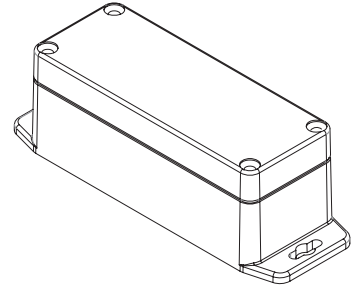
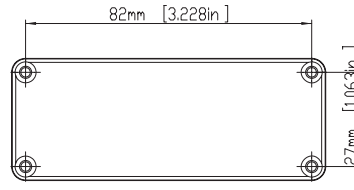
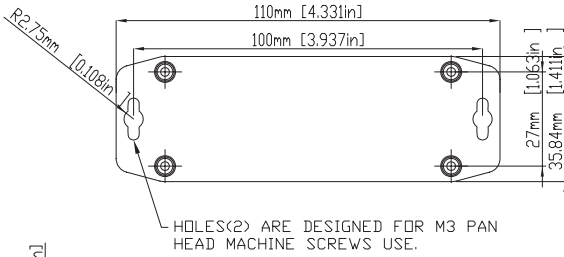
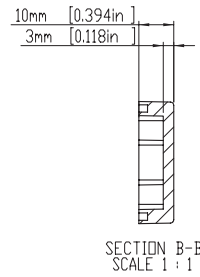
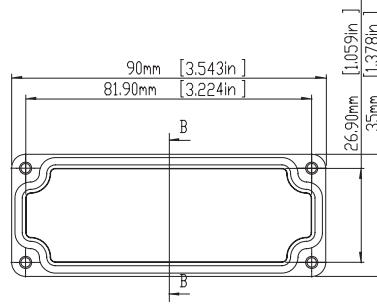
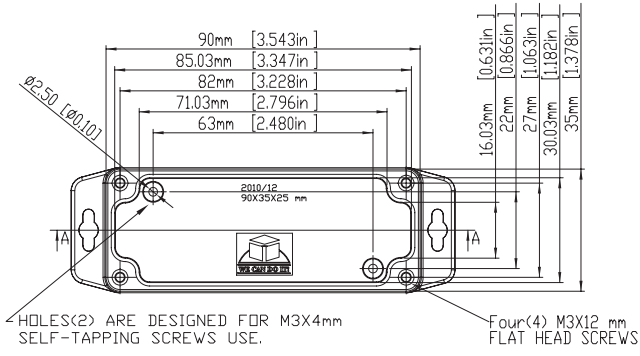
- Material: High Impact ABS (UL94-HB)
- Moulded in: Dark Grey.
- Operating temperature: -20°C to 80°C
- Mounting flange is designed on the bottom of the base, so the base can be mounted with pan head type of screws on the wall easily.
**Detailed screw size please refer the product drawing.

| MATERIAL: POLYCARBONATE | | | | | |
|-------------------------|------------|------|----------|-------|------------|
| ITEM No. | COLOR | | ITEM No. | COLOR | |
| | LID | BASE | | LID | BASE |
| G201MF | Light Grey | | G201CMF | Clear | Light Grey |
| G203MF | Light Grey | | G203CMF | Clear | Light Grey |
| G205MF | Light Grey | | G205CMF | Clear | Light Grey |
| G212MF | Light Grey | | G212CMF | Clear | Light Grey |
| G221MF | Light Grey | | G221CMF | Clear | Light Grey |
| G214MF | Light Grey | | G214CMF | Clear | Light Grey |
| G223MF | Light Grey | | G223CMF | Clear | Light Grey |
| G218MF | Light Grey | | G218CMF | Clear | Light Grey |
| G232MF | Light Grey | | G232CMF | Clear | Light Grey |
| G200MF | Light Grey | | G200CMF | Clear | Light Grey |
| G250MF | Light Grey | | G250CMF | Clear | Light Grey |
| G256MF | Light Grey | | G256CMF | Clear | Light Grey |
| G258MF | Light Grey | | G258CMF | Clear | Light Grey |
| G265MF | Light Grey | | G265CMF | Clear | Light Grey |
| G278MF | Light Grey | | G278CMF | Clear | Light Grey |
| G279MF | Light Grey | | G279CMF | Clear | Light Grey |

| MATERIAL: ABS | | | |
|---------------|-----------|------|------------------------|
| ITEM No. | COLOR | | EXTERNAL DIMENSION(mm) |
| | LID | BASE | |
| G302MF | Dark Grey | | 64 x 58 x 35 |
| G304MF | Dark Grey | | 115 x 65 x 40 |
| G308MF | Dark Grey | | 115 x 65 x 55 |
| G311MF | Dark Grey | | 115 x 90 x 55 |
| G331MF | Dark Grey | | 115 x 90 x 80 |
| G313MF | Dark Grey | | 171 x 121 x 55 |
| G340MF | Dark Grey | | 171 x 121 x 80 |
| G317MF | Dark Grey | | 222 x 146 x 55 |
| G353MF | Dark Grey | | 222 x 146 x 75 |
| G300MF | Dark Grey | | 90 x 35 x 35 |
| G362MF | Dark Grey | | 52 x 50 x 35 |
| G366MF | Dark Grey | | 82 x 80 x 55 |
| G368MF | Dark Grey | | 160 x 80 x 55 |
| G369MF | Dark Grey | | 160 x 80 x 85 |
| G386MF | Dark Grey | | 120 x 120 x 60 |
| G387MF | Dark Grey | | 120 x 120 x 90 |

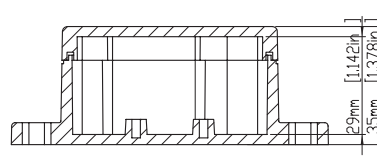
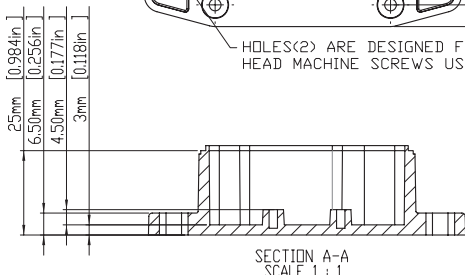
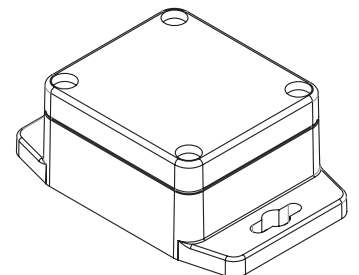
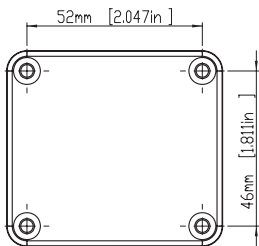
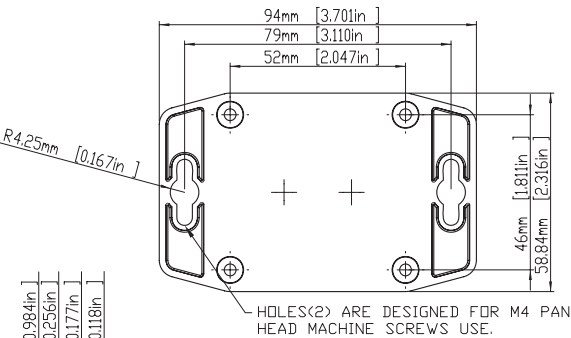
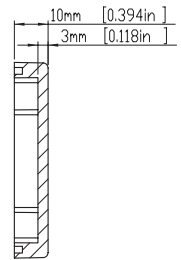
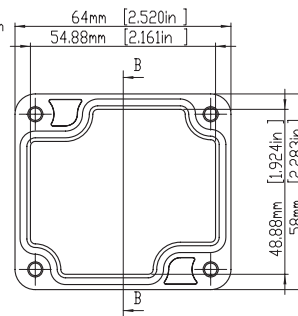
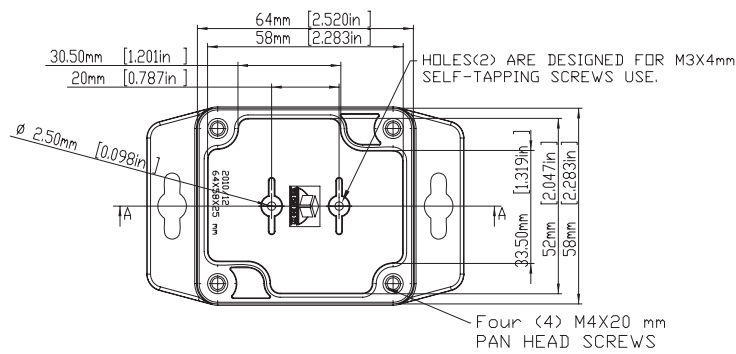
▶ Lid fixing screw are M4 stainless steel (non-magnetic) into threaded brass inserts.

G200MF / G300MF



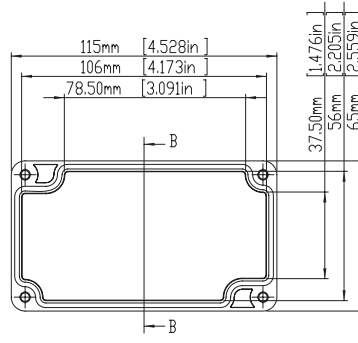
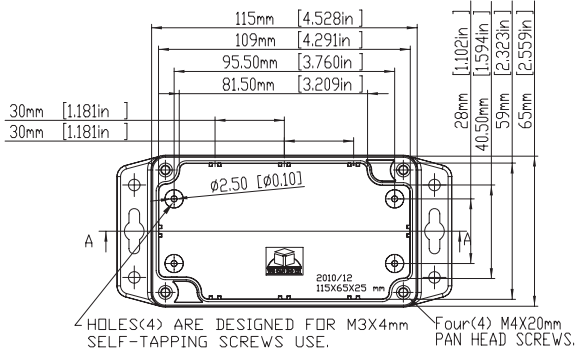
| According to ISO 2768-m | |
|-------------------------|------------|
| Measuring DIM=L | Tolerances |
| 0.5L<=3.0mm | ±0.1mm |
| 3.0L<=6.0 mm | ±0.1mm |
| 6.0L<=30.0 mm | ±0.2mm |
| 30.0L<=120.0 mm | ±0.3mm |
| 120.0L<=400.0 mm | ±0.5mm |
| 400.0L<=1000.0 mm | ±0.8mm |

G201MF / G302MF

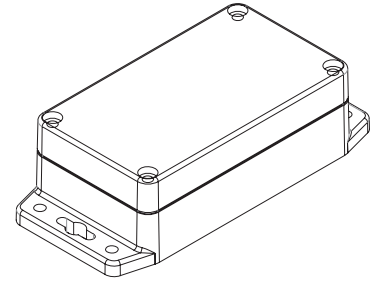
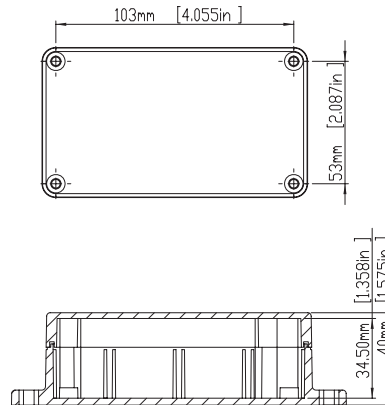
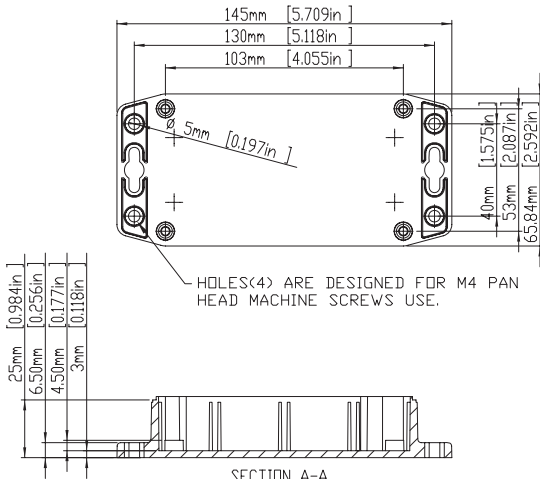


| According to ISO 2768-m | |
|-------------------------|------------|
| Measuring DIM=L | Tolerances |
| 0.5L<=3.0mm | ±0.1mm |
| 3.0L<=6.0 mm | ±0.1mm |
| 6.0L<=30.0 mm | ±0.2mm |
| 30.0L<=120.0 mm | ±0.3mm |
| 120.0L<=400.0 mm | ±0.5mm |
| 400.0L<=1000.0 mm | ±0.8mm |

G203MF / G304MF



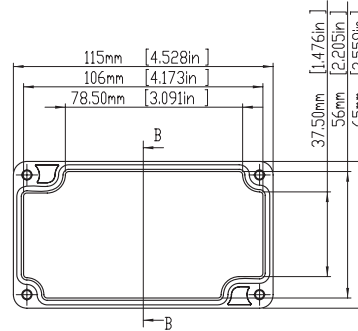
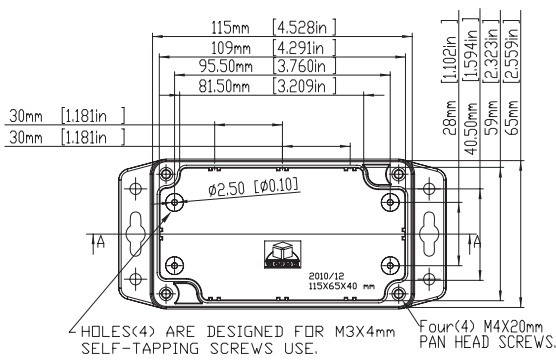
SECTION B-B
SCALE 2 : 3



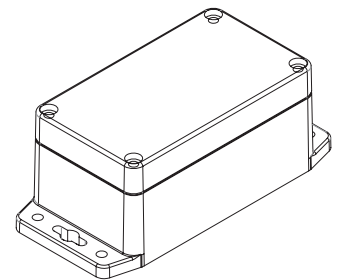
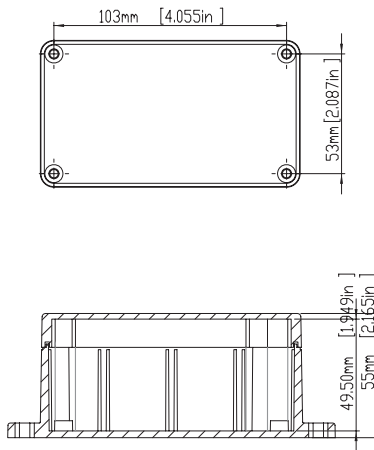
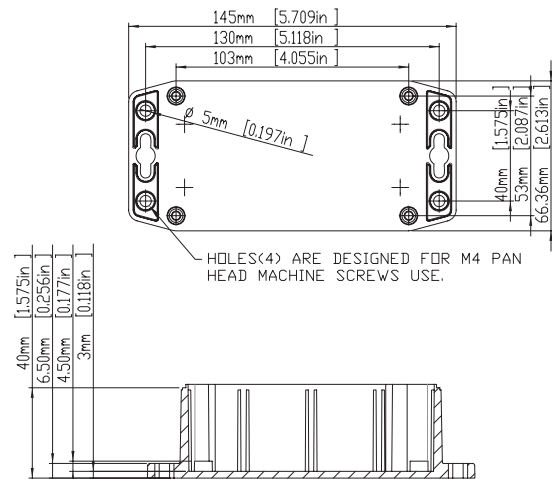
| According to ISO 2768-m | |
|-------------------------|------------|
| Measuring DIM=L | Tolerances |
| 0.5<L<=3.0mm | ±0.1mm |
| 3.0<L<=6.0 mm | ±0.1mm |
| 6.0<L<=30.0 mm | ±0.2mm |
| 30.0<L<=120.0 mm | ±0.3mm |
| 120.0<L<=400.0 mm | ±0.5mm |
| 400.0<L<=1000.0 mm | ±0.8mm |

SECTION A-A
SCALE 2 : 3

G205MF / G308MF



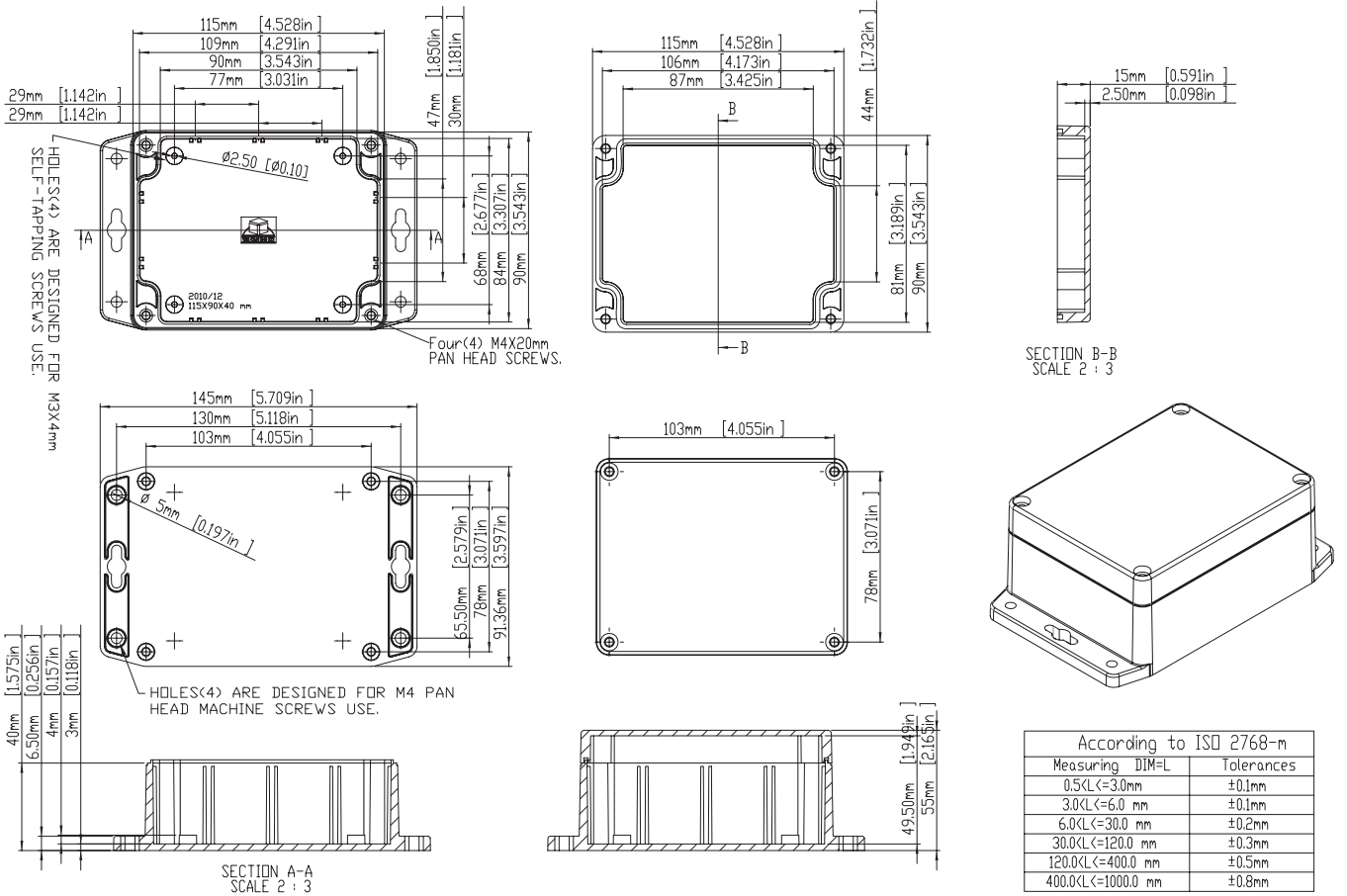
SECTION B-B
SCALE 2 : 3



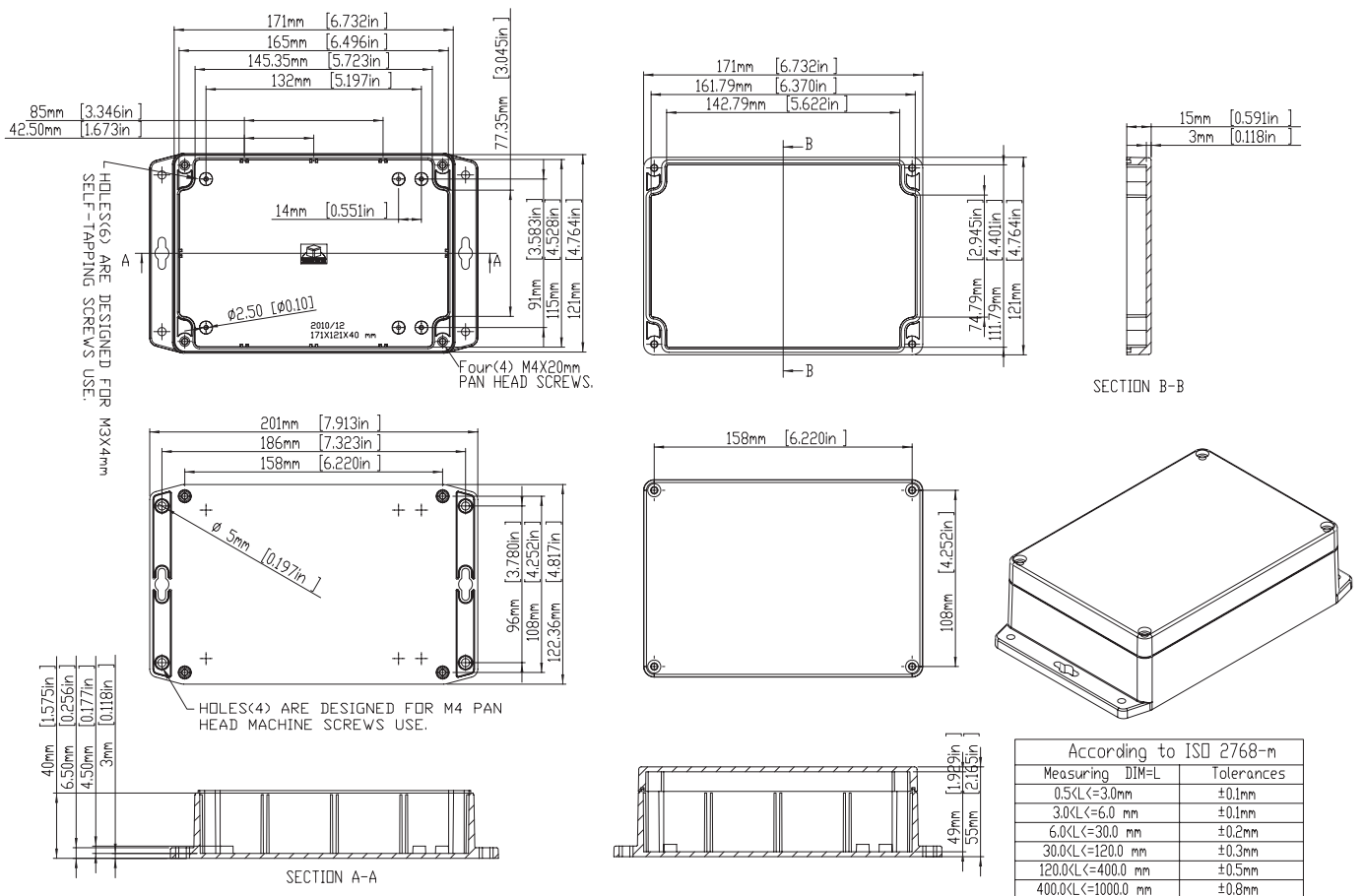
| According to ISO 2768-m | |
|-------------------------|------------|
| Measuring DIM=L | Tolerances |
| 0.5<L<=3.0mm | ±0.1mm |
| 3.0<L<=6.0 mm | ±0.1mm |
| 6.0<L<=30.0 mm | ±0.2mm |
| 30.0<L<=120.0 mm | ±0.3mm |
| 120.0<L<=400.0 mm | ±0.5mm |
| 400.0<L<=1000.0 mm | ±0.8mm |

SECTION A-A
SCALE 2 : 3

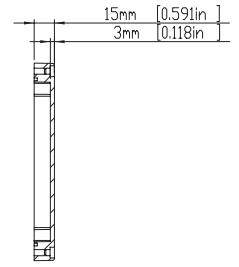
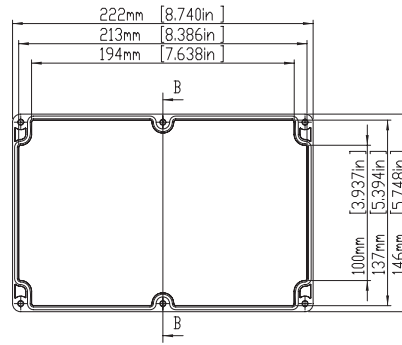
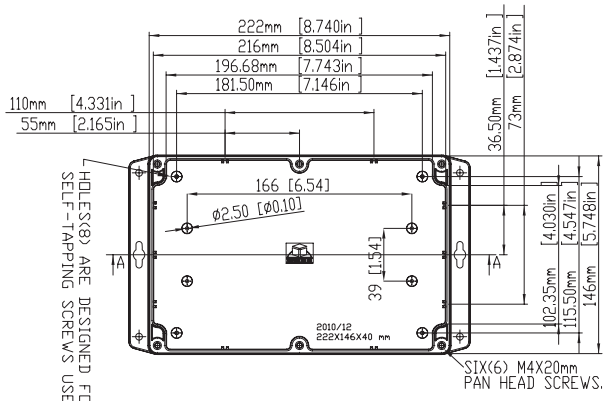
G212MF / G311MF



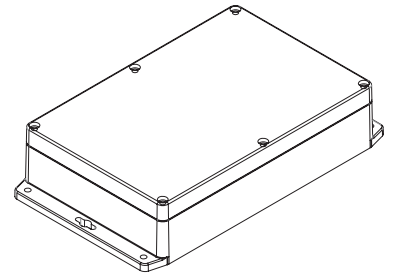
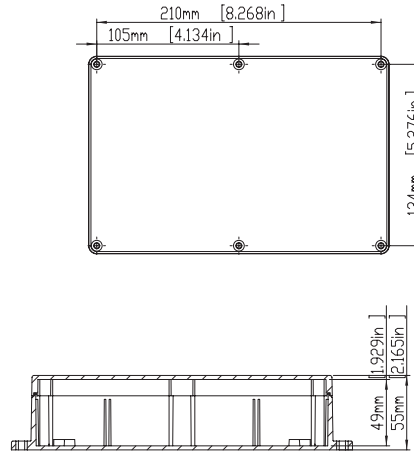
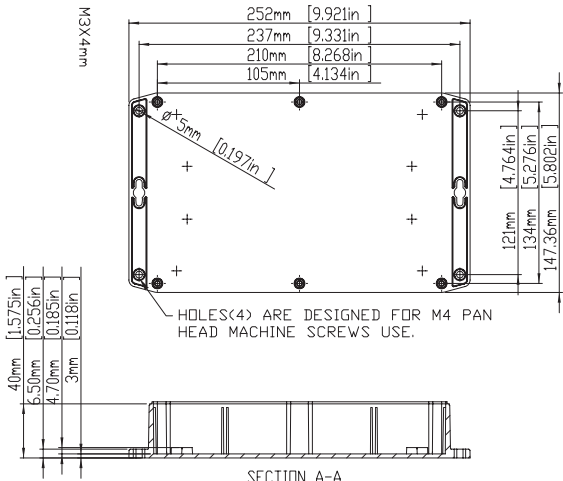
G214MF / G313MF



G218MF / G317MF

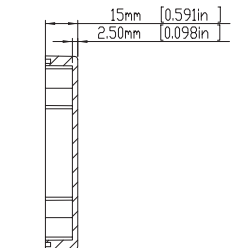
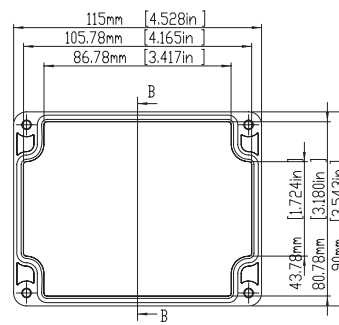
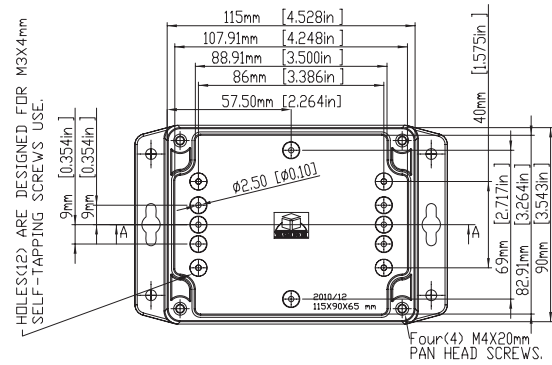


SECTION B-B
SCALE 2 : 5

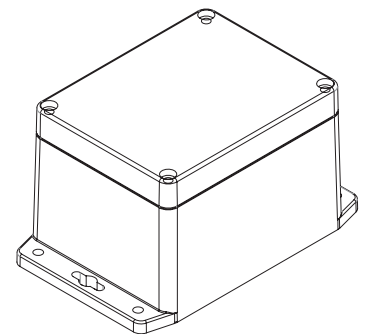
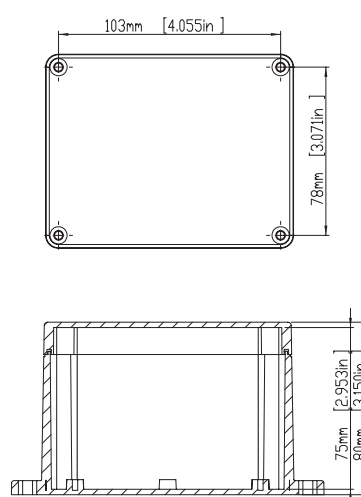
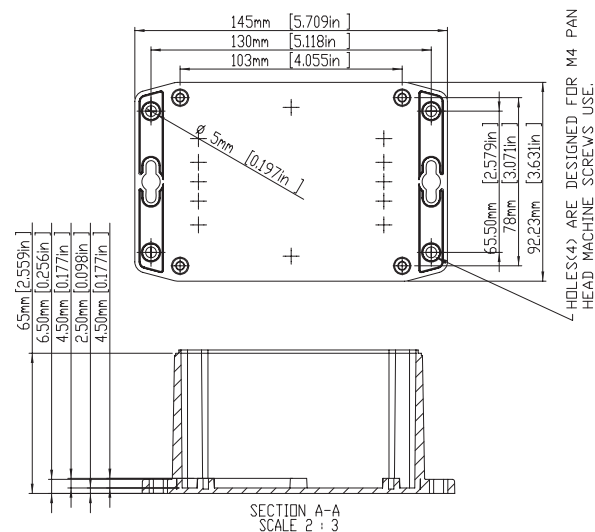


| According to ISO 2768-m | |
|-------------------------|------------|
| Measuring DIM=L | Tolerances |
| 0.5<L<=3.0mm | ±0.1mm |
| 3.0<L<=6.0 mm | ±0.1mm |
| 6.0<L<=30.0 mm | ±0.2mm |
| 30.0<L<=120.0 mm | ±0.3mm |
| 120.0<L<=400.0 mm | ±0.5mm |
| 400.0<L<=1000.0 mm | ±0.8mm |

G221MF / G331MF

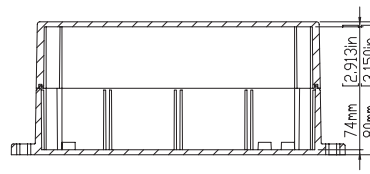
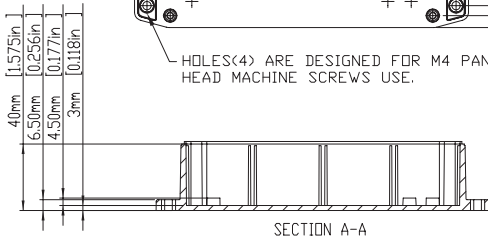
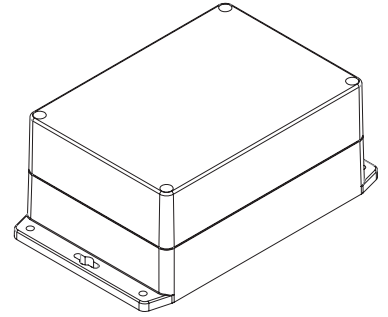
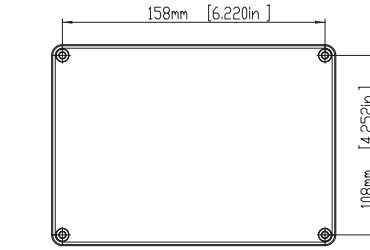
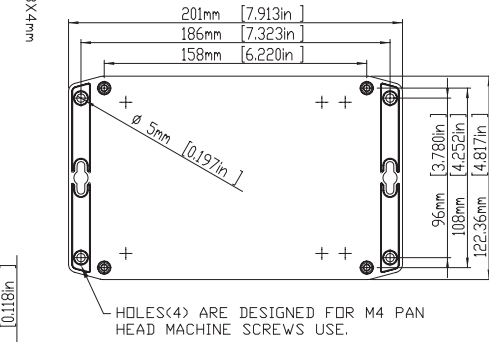
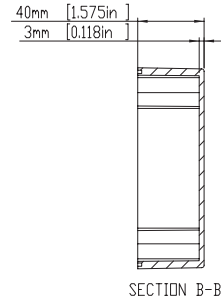
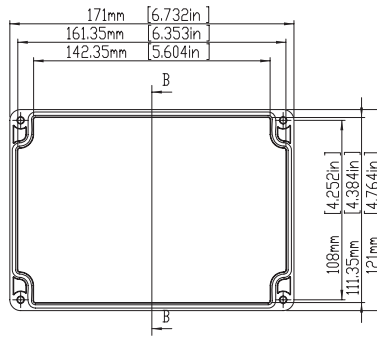
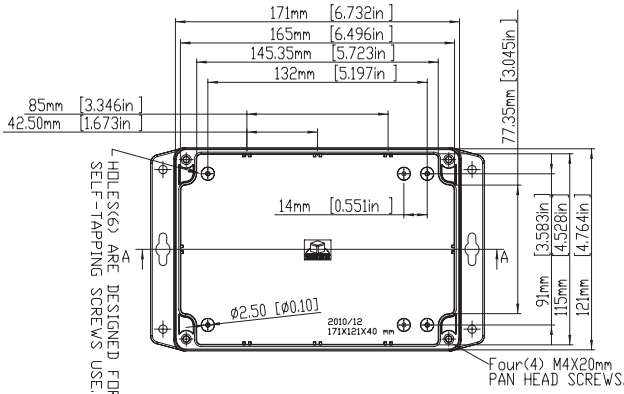


SECTION B-B
SCALE 2 : 3



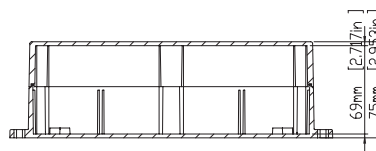
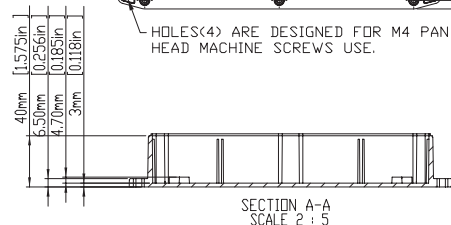
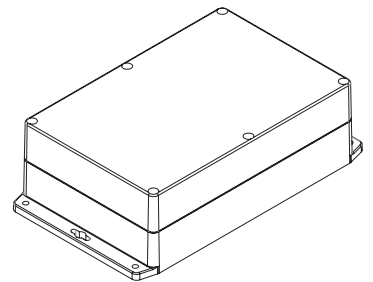
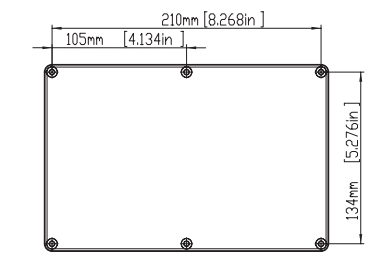
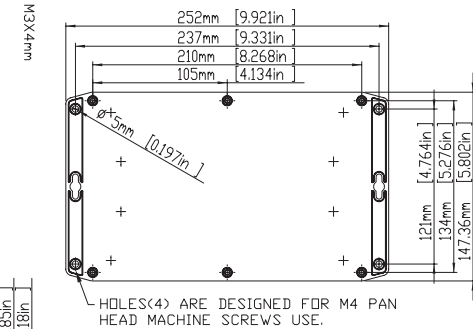
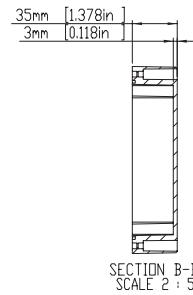
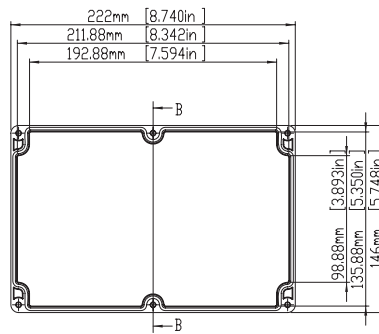
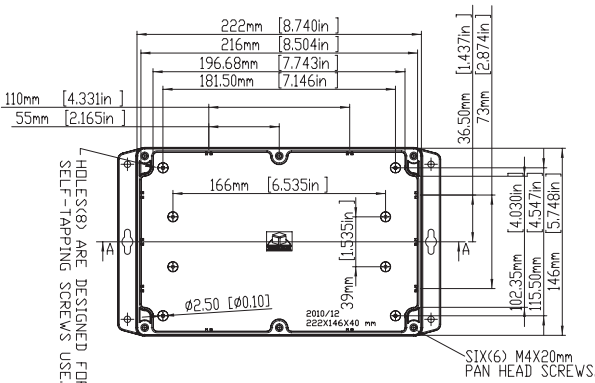
| According to ISO 2768-m | |
|-------------------------|------------|
| Measuring DIM=L | Tolerances |
| 0.5<L<=3.0mm | ±0.1mm |
| 3.0<L<=6.0 mm | ±0.1mm |
| 6.0<L<=30.0 mm | ±0.2mm |
| 30.0<L<=120.0 mm | ±0.3mm |
| 120.0<L<=400.0 mm | ±0.5mm |
| 400.0<L<=1000.0 mm | ±0.8mm |

G223MF / G340MF



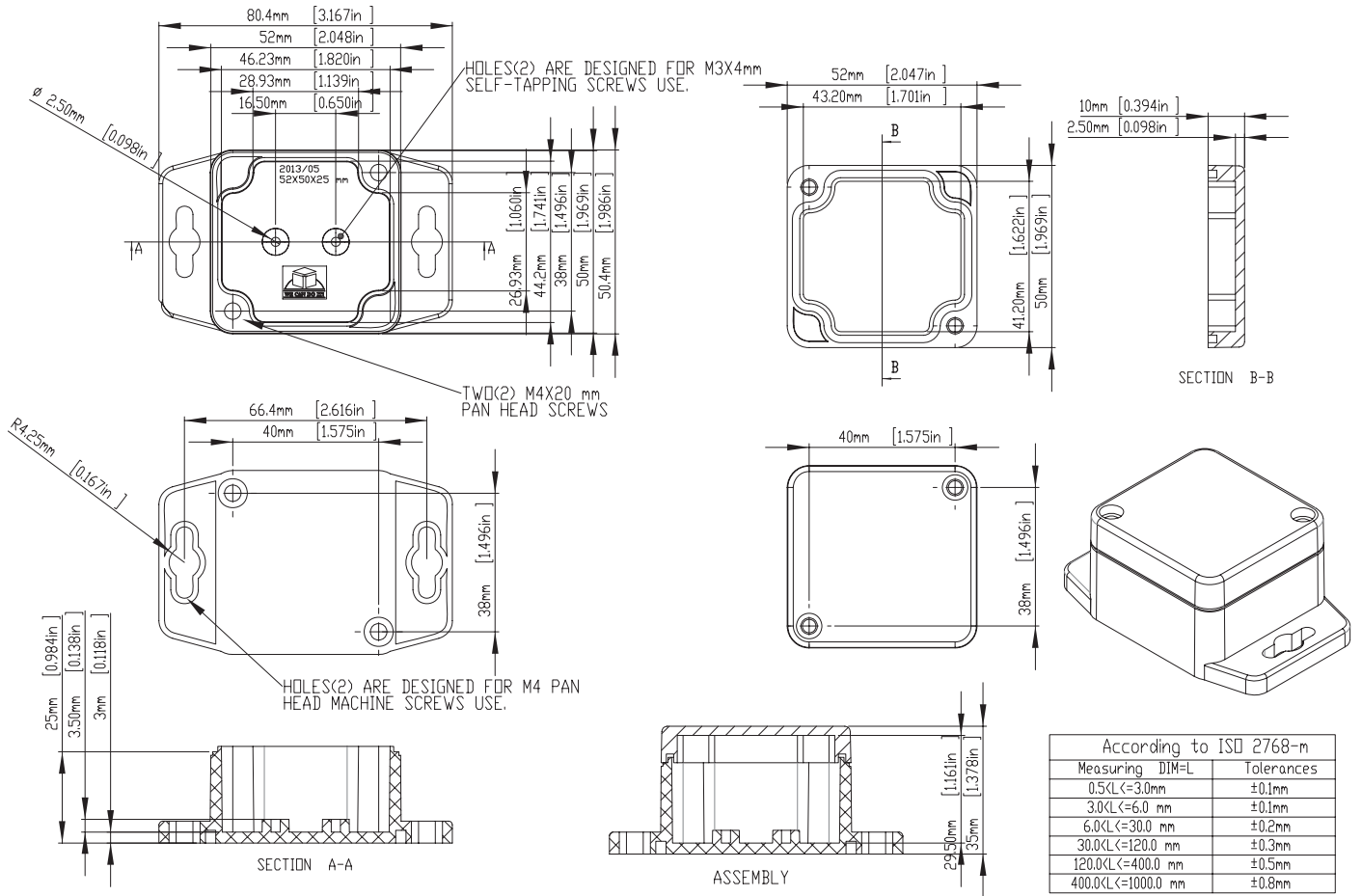
| According to ISO 2768-m | |
|-------------------------|------------|
| Measuring DIM=L | Tolerances |
| 0.5<L≤3.0mm | ±0.1mm |
| 3.0<L≤6.0 mm | ±0.1mm |
| 6.0<L≤30.0 mm | ±0.2mm |
| 30.0<L≤120.0 mm | ±0.3mm |
| 120.0<L≤400.0 mm | ±0.5mm |
| 400.0<L≤1000.0 mm | ±0.8mm |

G232MF / G353MF

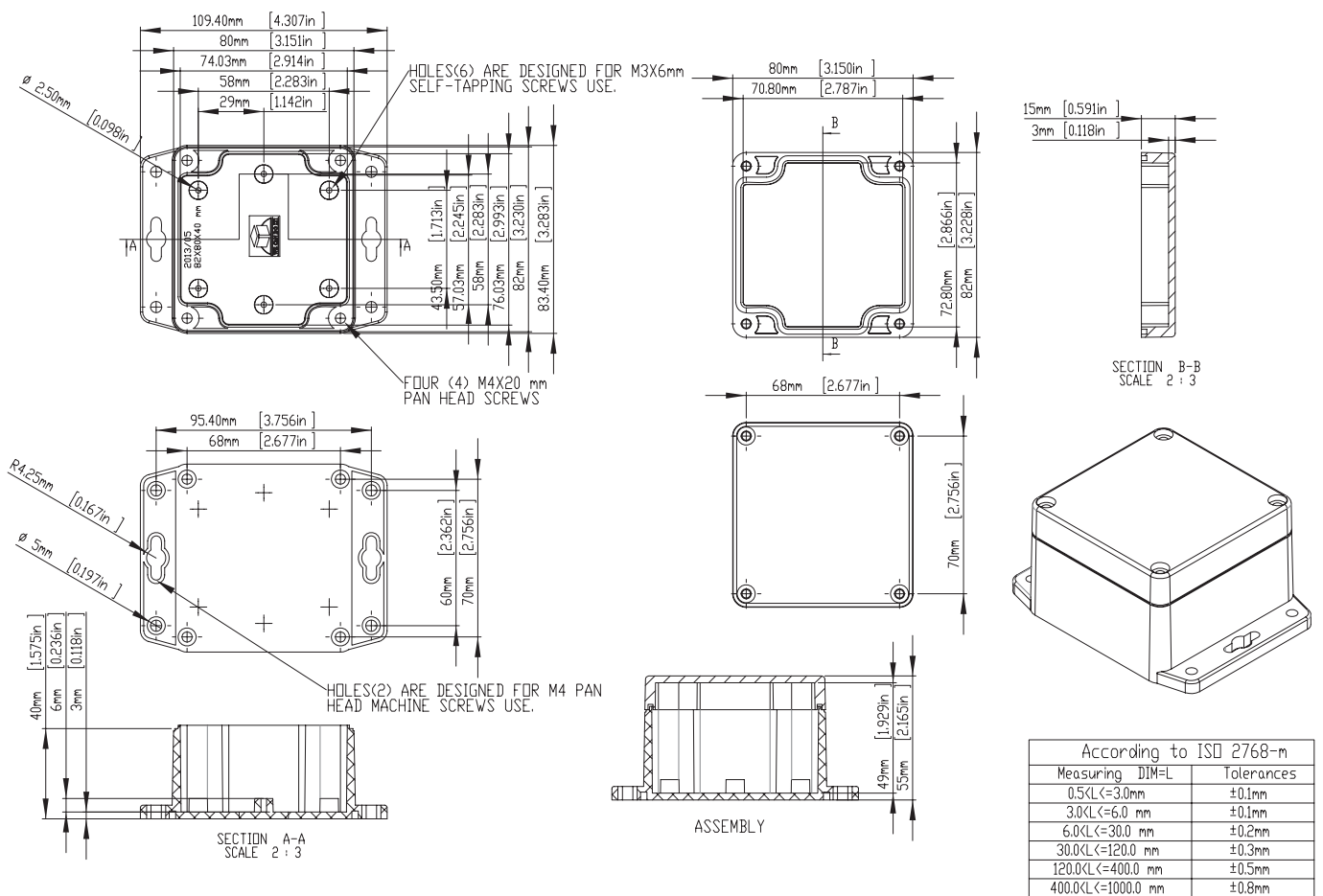


| According to ISO 2768-m | |
|-------------------------|------------|
| Measuring DIM=L | Tolerances |
| 0.5<L≤3.0mm | ±0.1mm |
| 3.0<L≤6.0 mm | ±0.1mm |
| 6.0<L≤30.0 mm | ±0.2mm |
| 30.0<L≤120.0 mm | ±0.3mm |
| 120.0<L≤400.0 mm | ±0.5mm |
| 400.0<L≤1000.0 mm | ±0.8mm |

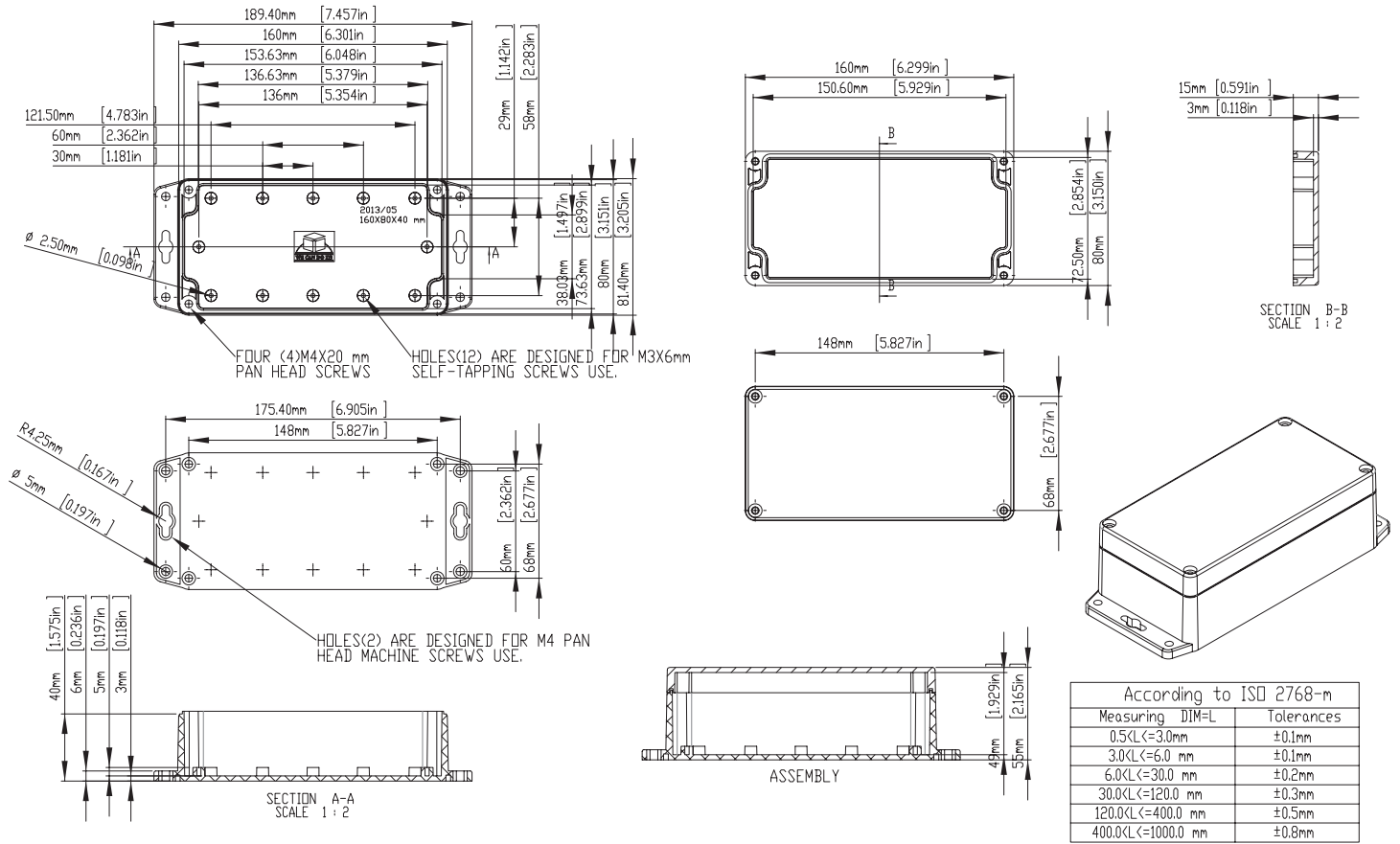
G250MF / G362MF



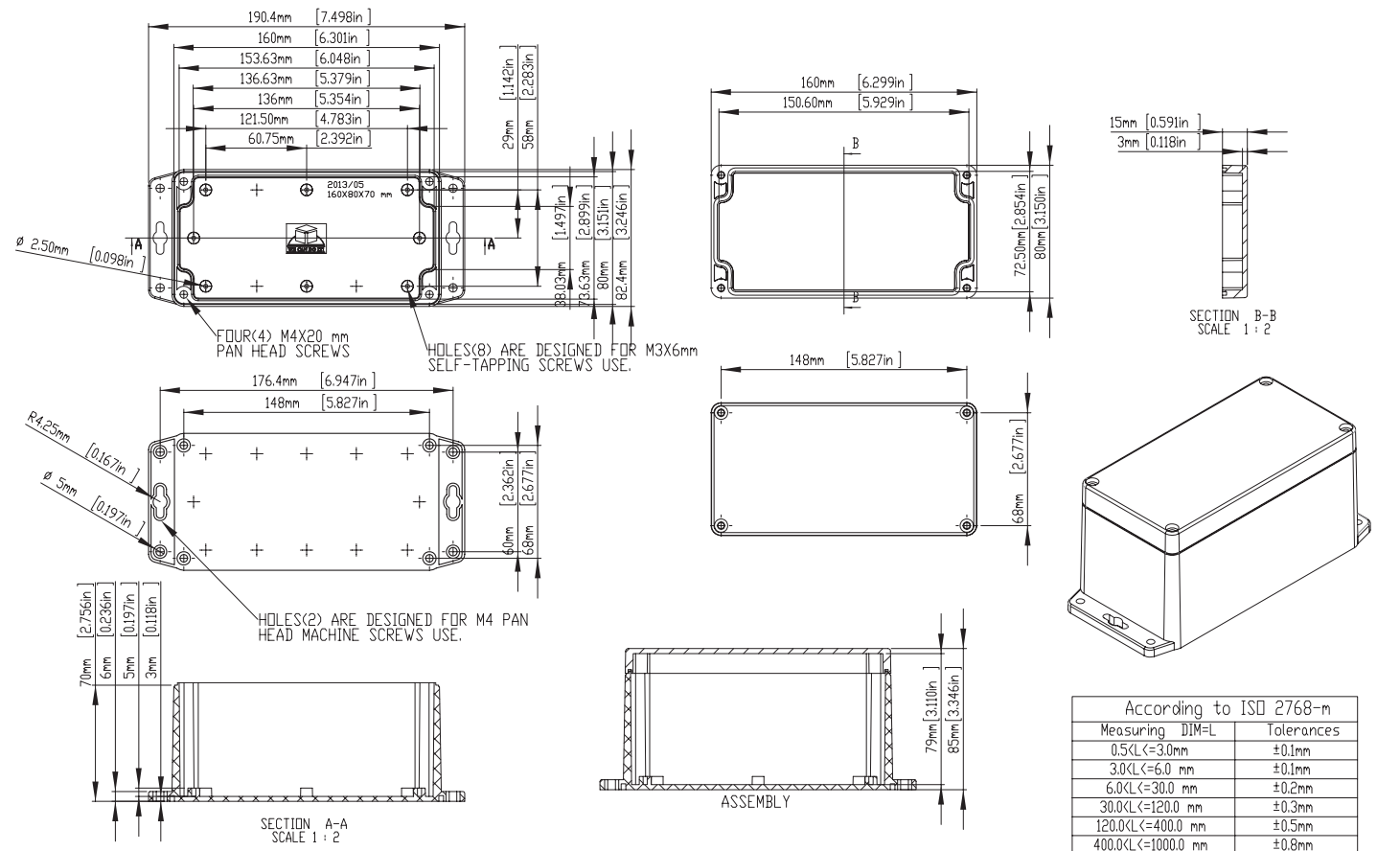
G256MF / G366MF



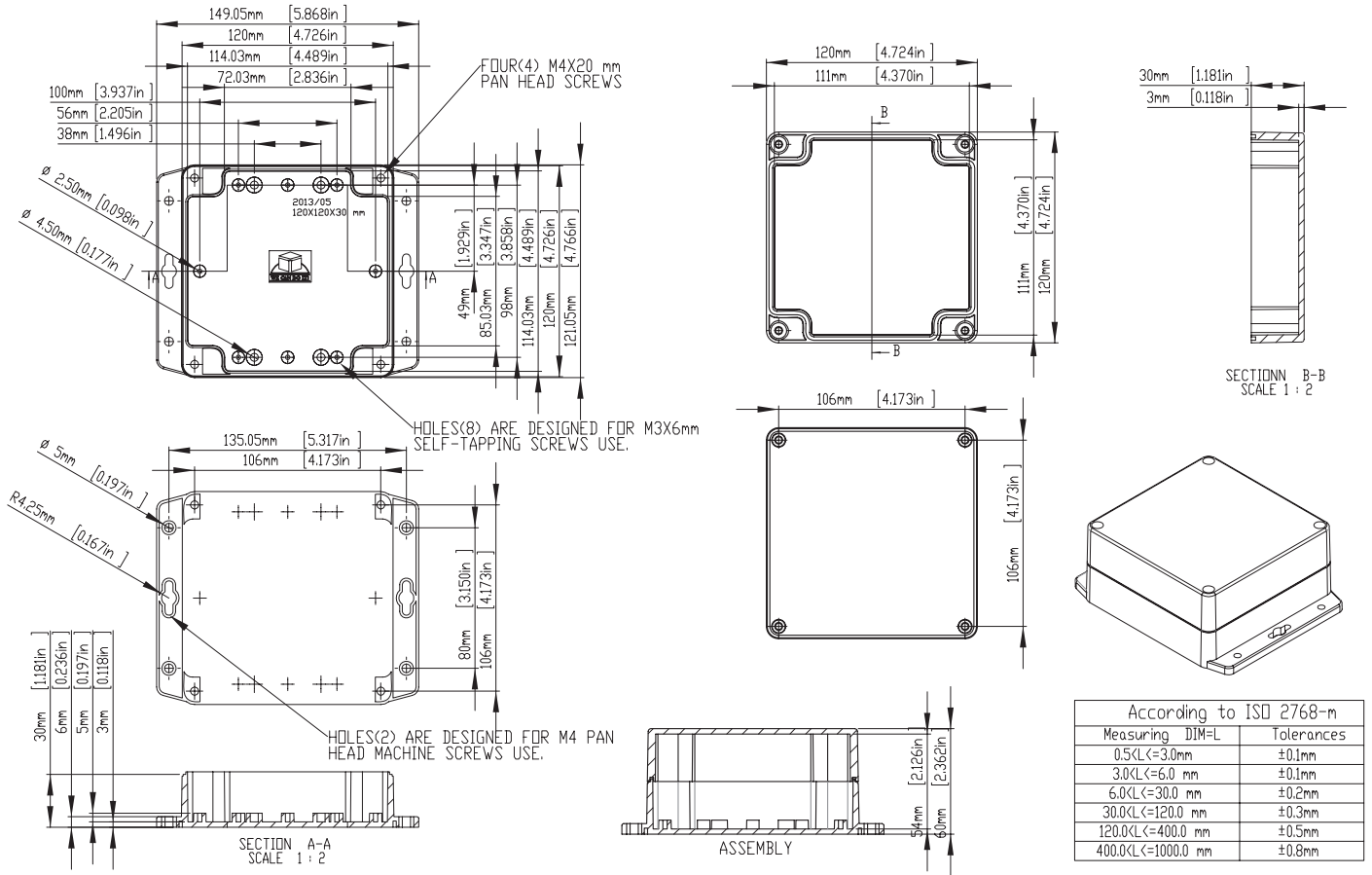
G258MF / G368MF



G265MF / G369MF



G278MF / G386MF



G279MF / G387MF

