

Totalizers electromechanic

Small impulse counters, adding
Display 4- or 6-digits, with/without reset button

F 102, F 112, F 122



F 102 - Center screw mount at rear



F 112 - Front panel with screw mount



F 122 - Front panel with spring clips

Features

- Small impulse counter
- Adding
- Display 4- or 6-digits
- With or without reset button

Technical data - electrical ratings

Voltage supply	24/110 VAC $\pm 10\%$ (50/60 Hz) 230 VAC $+6/-10\%$ (50/60 Hz) 24 VDC $\pm 10\%$
Residual ripple	<48 %
Nominal frequency	50 / 60 Hz
Power consumption	2.3 W, 5.5 VA
Pulse ratio	1:1
Service life	VDC - 100 million impulses VAC - 50 million impulses
Standard DIN EN 61010-1	Protection class II Overvoltage category II Pollution degree 2
Emitted interference	DIN EN 61000-6-4
Interference immunity	DIN EN 61000-6-2

Totalizers electromechanic

Small impulse counters, adding

Display 4- or 6-digits, with/without reset button

F 102, F 112, F 122

Technical data - mechanical design

Display	White numbers on black
Number of digits	4-digits with reset button 6-digits without reset button
Digit height	4 mm
Count mode	1 impulse = 1 count
Step-by-step switching	Adding in 2 half steps
Measuring range	9999 and 999 999
Zero setting	Manual by reset button
Ambient temperature	0...+45 °C
Storage temperature	-20...+70 °C
Relative humidity	80 % non-condensing
Protection DIN EN 60529	IP 41
Housing type	Built-in housing
Connection	Pin connector D = 1.5 mm
Cutout dimensions	33 x 22 mm
Weight approx.	75 g
Material	Housing: Hostaform POM, black

F 102

Mounting	Rear center screw mount
Dimensions W x H x L	32 x 21.5 x 59 mm
Mounting depth	74 mm

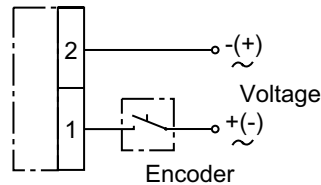
F 112

Mounting	Front panel with 2 screws
Dimensions W x H x L	39 x 37 x 59 mm
Mounting depth	72 mm

F 122

Mounting	Front panel with spring clips
Dimensions W x H x L	37 x 25 x 59 mm
Mounting depth	72 mm

Connection diagram



Trigger level

Max. counting speed 6 pulses/s

Voltage	230 VAC +6/-10 %
Power	5.5 VA
Min. pulse duration	50 ms
Min. pulse interval	120 ms
Switch on time (at 25 °C)	30 % max. 7 min

Max. counting speed 10 pulses/s

Voltage	24/110 VAC ±10 %
Power	3 VA
Min. pulse duration	50 ms
Min. pulse interval	50 ms
Switch on time (at 25 °C)	100 %

Max. counting speed 20 pulses/s

Voltage	24 VDC ±10 %
Power	2.3 W
Min. pulse duration	25 ms
Min. pulse interval	25 ms
Switch on time (at 25 °C)	100 %

Totalizers electromechanic

Small impulse counters, adding

Display 4- or 6-digits, with/without reset button

F 102, F 112, F 122

Part number

Center screw mount

F 102.

			<u>Display</u>
			B 4-digits 9999
			D 6-digits 999 999
			<u>Voltage</u>
			C3 24 VDC
			C5 24 VAC
			C8 110 VAC
			C9 230 VAC
			<u>Zero setting</u>
			450L With reset button, 4-digits
			600N Without reset button, 6-digits

Front panel with screw mount

F 112.

			<u>Display</u>
			B 4-digits 9999
			D 6-digits 999 999
			<u>Voltage</u>
			C3 24 VDC
			C5 24 VAC
			C8 110 VAC
			C9 230 VAC
			<u>Zero setting</u>
			450K With reset button, 4-digits
			600M Without reset button, 6-digits

Front panel with spring clips mount

F 122.

			<u>Display</u>
			B 4-digits 9999
			D 6-digits 999 999
			<u>Voltage</u>
			C3 24 VDC
			C5 24 VAC
			C8 110 VAC
			C9 230 VAC
			<u>Zero setting</u>
			450N With reset button, 4-digits
			600Q Without reset button, 6-digits

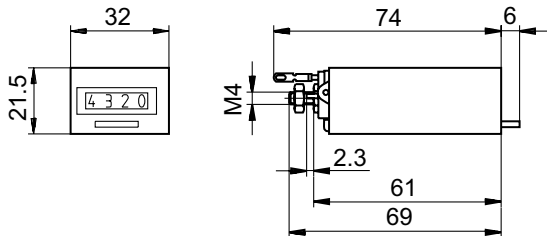
Totalizers electromechanic

Small impulse counters, adding
Display 4- or 6-digits, with/without reset button

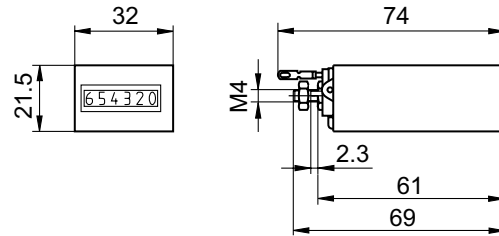
F 102, F 112, F 122

Dimensions

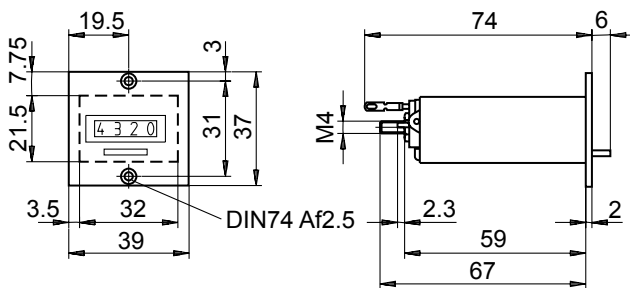
F 102 with reset button, 4-digits



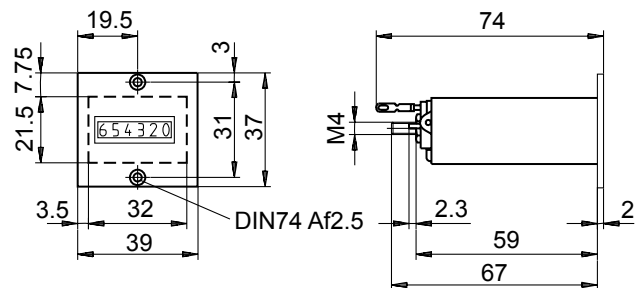
F 102 without reset button, 6-digits



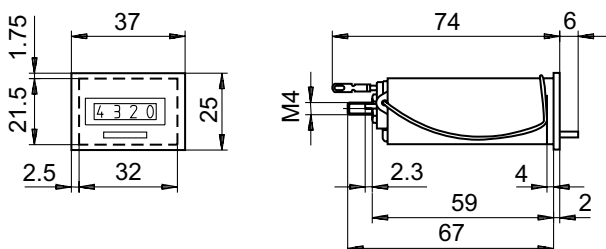
F 112 with reset button, 4-digits



F 112 without reset button, 6-digits



F 122 with reset button, 4-digits



F 122 without reset button, 6-digits

