

**FEMALE PLUG
SCREWLESS**

**CONNETTORI FEMMINA
MOLLA**

**CONNECTEURS FEMELLE
RESSORT**

**STECKERTEIL
FEDERKRAFT**

Pitch Passo	mm
Rated Voltage Tensione nominale	V
Rated Current Intensità nominale	A
Types of cables Type of conductor	mm ² AWG
Nominal cross section Sezione nominale	mm ² AWG
Stripping length Lunghezza spelatura	mm
Temperature Temperatura	°C
Housing Corpo isolante	

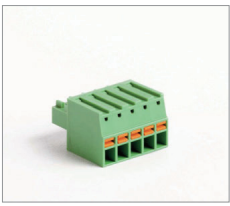
IMQ	EN61984
VDE	EN61984
cUL	UL1059 + C22 2 n°158
Poles Pôles Câbles Couleurs	X Y
Other information Autres données	Affidati Weitere Informationen

How to order Référence de commande	Ordinazione Bestellungsbeleg
MRT48 P3.5 / X ... Y N...	
Type Pitch Poles Version Colors Printing	
Tipo Passo Poli Versione Colori Numerazione	
Type Pas Pôles Version Couleurs Marquage	
Typ. Bauform/Polaahl. Version. Farben. Bedruckung	

MRT48

Single block - Blocco unico
Monoblocc - Einzelblock

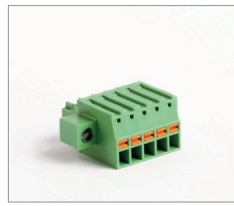
Poles - Poli - Pôles - Polzahl **2/20**



MRT48..FV

Single block - Blocco unico
Monoblocc - Einzelblock

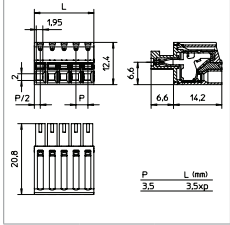
Poles - Poli - Pôles - Polzahl **2/20**



3.5			3.5		
150			150		
8			8		
0.2 ÷ 1.5 28 ÷ 16			0.2 ÷ 1.5 28 ÷ 16		
8			8		
110			110		
PA · UL 94 V0			PA · UL 94 V0		
V	A	mm ² /AWG	V	A	mm ² /AWG
150	8	0.2 ÷ 1.5	150	8	0.2 ÷ 1.5
300	8	26 ÷ 16	300	8	26 ÷ 16
min 2 - max 20			min 2 - max 20		
VE / on demand GR GR1 NE AR BL RO GI			VE / on demand GR GR1 NE AR BL RO GI		
D/B2			D/B2		

Version
Versione

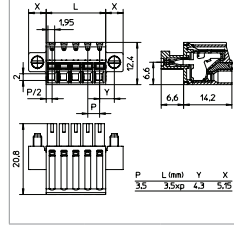
...



P L (mm)
3.5 3.5sp

Version
Versione

FV

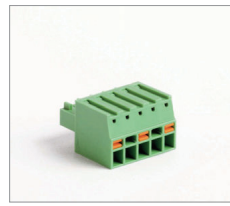


P L (mm) Y X
3.5 3.5sp 4.3 5.75

MRT48

Single block - Blocco unico
Monoblocc - Einzelblock

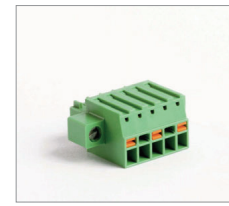
Poles - Poli - Pôles - Polzahl **2/10**



MRT48..FV

Single block - Blocco unico
Monoblocc - Einzelblock

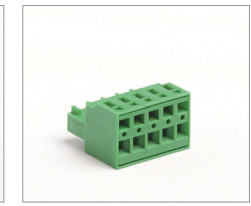
Poles - Poli - Pôles - Polzahl **2/10**



MRT37

Single block - Blocco unico
Monoblocc - Einzelblock

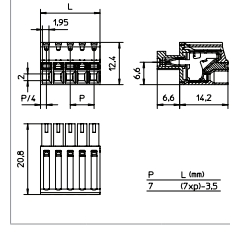
Poles - Poli - Pôles - Polzahl **2/20**



7			7			3.81		
400			400			200		
8			8			12		
0.2 ÷ 1.5 28 ÷ 16			0.2 ÷ 1.5 28 ÷ 16			0.2 ÷ 1.5 24 ÷ 16		
8			8			8		
110			110			110		
PA · UL 94 V0			PA · UL 94 V0			PA · UL 94 V0		
V	A	mm ² /AWG	V	A	mm ² /AWG	V	A	mm ² /AWG
400	8	0.2 ÷ 1.5	400	8	0.2 ÷ 1.5	200	12	0.2 ÷ 1.5
300	8	26 ÷ 16	300	8	26 ÷ 16	300	8	24 ÷ 16
min 2 - max 10			min 2 - max 10			min 2 - max 20		
VE / on demand GR GR1 NE AR BL RO GI			VE / on demand GR GR1 NE AR BL RO GI			VE / on demand GR GR1 NE AR BL RO GI		
D/B2			D/B2			D/B2		

Version
Versione

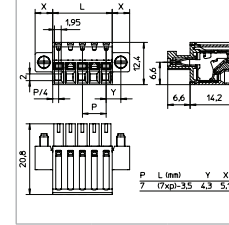
...



P L (mm)
7 7xsp-3.5

Version
Versione

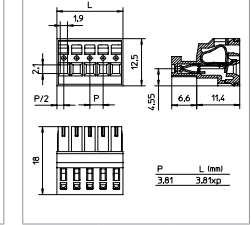
FV



P L (mm) Y X
7 7xsp-3.5 4.3 5.75

Version
Versione

...



P L (mm)
3.81 3.81sp

**FEMALE PLUG
SCREWLESS**

**CONNETTORI FEMMINA
MOLLA**

**CONNECTEURS FEMELLE
RESSORT**

**STECKERTEIL
FEDERKRAFT**

Pitch Passo	mm
Rated Voltage Tensione nominale	V
Rated Current Intensità nominale	A
Types of cables Type of conductor	mm ² AWG
Nominal cross section Sezione nominale	mm ² AWG
Stripping length Lunghezza spelatura	mm
Temperature Temperatura	°C
Housing Corpo isolante	

IMQ	EN61984
VDE	EN61984
cUL	UL1059 + C22.2 n°158

Poles Poli	X
Colors Colori	Y
Other information Altre dati	P

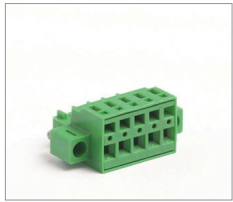
How to order Riferenza di comando	Ordinazione Bezeichnungstafel				
MRT37 P3.81 / X	FV Y N...				
Type Tipo	Pitch Passo	Poles Poli	Version Versione	Colors Colori	Printing Numerazione
Type Tipo	Pitch Passo	Poles Poli	Version Versione	Colors Colori	Marking Marcatura
Type Tipo	Pitch Passo	Poles Poli	Version Versione	Colors Colori	Marking Marcatura

MRT37..FV

Single block - Blocco unico
Monobloc - Einzelblock

Poles - Poli - Póles - Polzahl

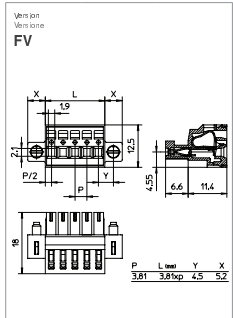
2/20



Pitch Passo	3,81
Rated Voltage Tensione nominale	200
Rated Current Intensità nominale	12
Types of cables Type of conductor	mm ² AWG
Nominal cross section Sezione nominale	mm ² AWG
Stripping length Lunghezza spelatura	mm
Temperature Temperatura	°C
Housing Corpo isolante	

V	A	mm ² /AWG
200	12	0,2 ÷ 1,5
200	12	0,2 ÷ 1,5
300	8	24 ÷ 16

min 2 - max 20
VE / on demand GR GR1 NE AR BL RO GI
D/B2

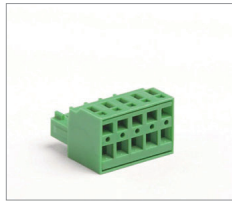


MRT37

Single block - Blocco unico
Monobloc - Einzelblock

Poles - Poli - Póles - Polzahl

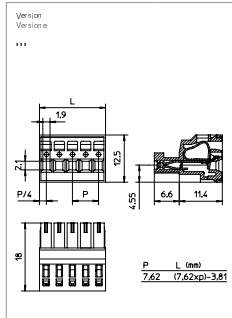
2/10



Pitch Passo	7,62
Rated Voltage Tensione nominale	500
Rated Current Intensità nominale	12
Types of cables Type of conductor	mm ² AWG
Nominal cross section Sezione nominale	mm ² AWG
Stripping length Lunghezza spelatura	mm
Temperature Temperatura	°C
Housing Corpo isolante	

V	A	mm ² /AWG
500	12	0,2 ÷ 1,5
500	12	0,2 ÷ 1,5
300	8	24 ÷ 16

min 2 - max 10
VE / on demand GR GR1 NE AR BL RO GI
D/B2

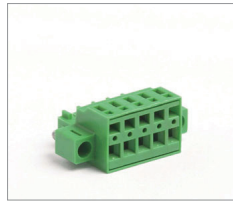


MRT37..FV

Single block - Blocco unico
Monobloc - Einzelblock

Poles - Poli - Póles - Polzahl

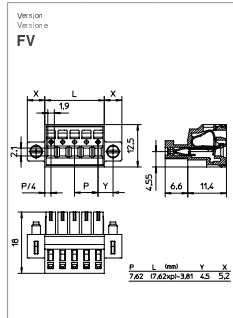
2/10



Pitch Passo	7,62
Rated Voltage Tensione nominale	500
Rated Current Intensità nominale	12
Types of cables Type of conductor	mm ² AWG
Nominal cross section Sezione nominale	mm ² AWG
Stripping length Lunghezza spelatura	mm
Temperature Temperatura	°C
Housing Corpo isolante	

V	A	mm ² /AWG
500	12	0,2 ÷ 1,5
500	12	0,2 ÷ 1,5
300	8	24 ÷ 16

min 2 - max 10
VE / on demand GR GR1 NE AR BL RO GI
D/B2

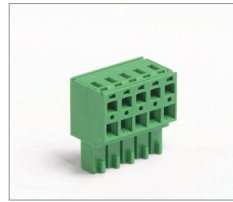


MRT38

Single block - Blocco unico
Monobloc - Einzelblock

Poles - Poli - Póles - Polzahl

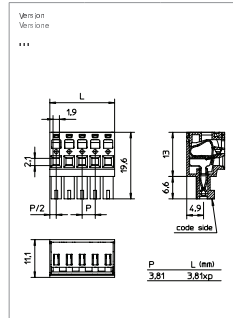
2/20



Pitch Passo	3,81
Rated Voltage Tensione nominale	200
Rated Current Intensità nominale	12
Types of cables Type of conductor	mm ² AWG
Nominal cross section Sezione nominale	mm ² AWG
Stripping length Lunghezza spelatura	mm
Temperature Temperatura	°C
Housing Corpo isolante	

V	A	mm ² /AWG
200	12	0,2 ÷ 1,5
200	12	0,2 ÷ 1,5
300	8	24 ÷ 16

min 2 - max 20
VE / on demand GR GR1 NE AR BL RO GI
D/B2

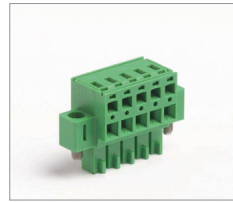


MRT38..FV

Single block - Blocco unico
Monobloc - Einzelblock

Poles - Poli - Póles - Polzahl

2/20



Pitch Passo	3,81
Rated Voltage Tensione nominale	200
Rated Current Intensità nominale	12
Types of cables Type of conductor	mm ² AWG
Nominal cross section Sezione nominale	mm ² AWG
Stripping length Lunghezza spelatura	mm
Temperature Temperatura	°C
Housing Corpo isolante	

V	A	mm ² /AWG
200	12	0,2 ÷ 1,5
200	12	0,2 ÷ 1,5
300	8	24 ÷ 16

min 2 - max 20
VE / on demand GR GR1 NE AR BL RO GI
D/B2

