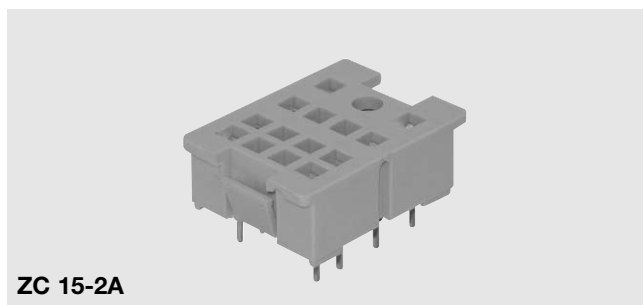
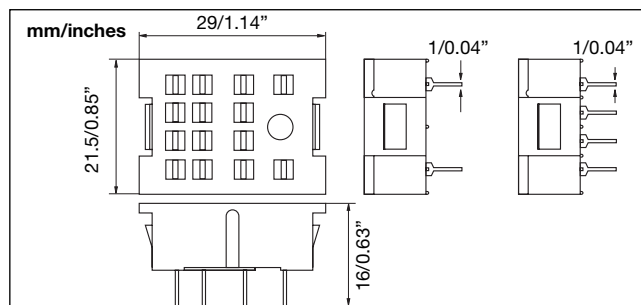


Sockets for RMI Relays

ZC 15/2A - ZC 15/4A



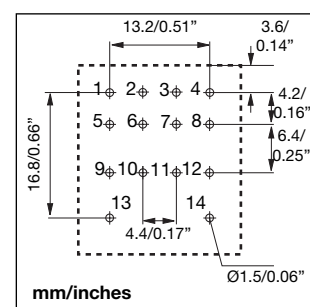
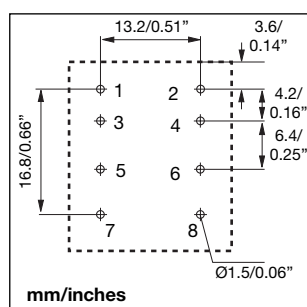
ZC 15-2A



General data

Rated voltage	300V	
Rated current	ZC 15-2A	12A
	ZC 15-4A	10A
Insulation voltage	2kV	
Operating temperature	-25° to +85°C (-13° to +185°F)	
Socket material	ABS Grey	
Socket colour	RAL 7035 / Pantone 1C	
Contact material	Copper tin plated CuSn ₆	

Ordering part number	ZC152A
Ordering part number	ZC154A
Box content:	10 sockets
Box size: (W 125 x D 30 x H 25) mm	Weight: 100g
(W 4.92 x D 1.18 x H 0.98) inches	Weight: 3.53oz



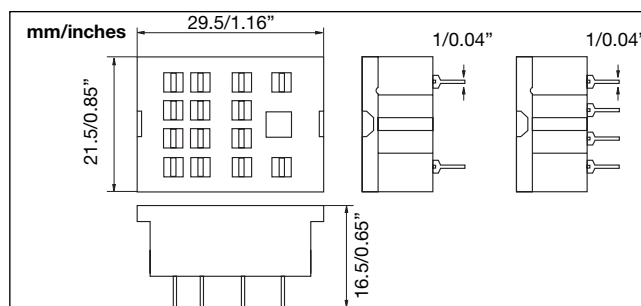
Approvals



ZC 15/2 - ZC 15/4



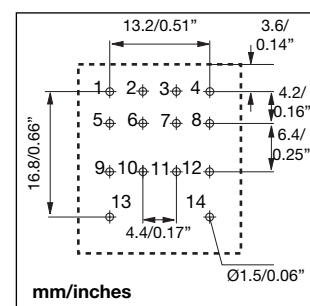
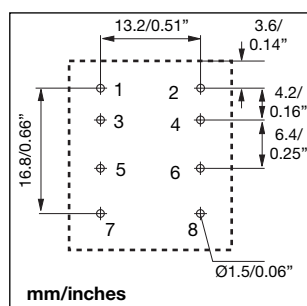
ZC 15/2



General data

Rated Voltage	250V	
Rated Current	10A	
Insulation Voltage	2kV	
Operating temperature	-25° to +85°C (-13° to +185°F)	
Socket Material	PPEm	
Socket colour	Black	
Contact material	Copper tin plated CuSn	

Ordering part number	ZC15/2	9399028000
Ordering part number	ZC15/4	9399028200
Box content:	100 sockets	
Box size: (W 150 x D 110 x H 70) mm	Weight: 900g	
(W 5.90 x D 4.33 x H 2.75) inches	Weight: 31.75oz	



Approvals

