



## fitted with

work equipment  
connected load  
power consumption  
system of protection  
class of protection  
technology  
usage  
luminaire body

lamp cover  
weight (net)  
mains lead

design  
fastening  
dimension  
special features

## LED

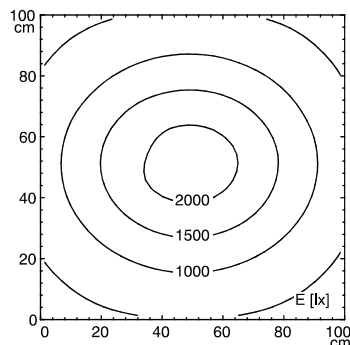
Energy efficiency category A+  
electronic transformer  
100-240 V; 50/60 Hz  
approx. 47 W  
IP 20  
II  
continuously dimmable  
push button  
sectional aluminium, anodised, aluminium coloured  
anodised  
polycarbonate, white opal  
approx. 1.8 kg  
approx. 5 m; mains plug  
CEE 7/XVI  
mounted version  
screw-down bracket; horizontal  
658  
fixed connection, Ra (luminaire) ca. 90



CEE 7/XVI

## illuminance

Distance: 50 cm  
Em: 1082 lx  
Emax: 2219 lx  
Emin: 348 lx



## luminous intensity

