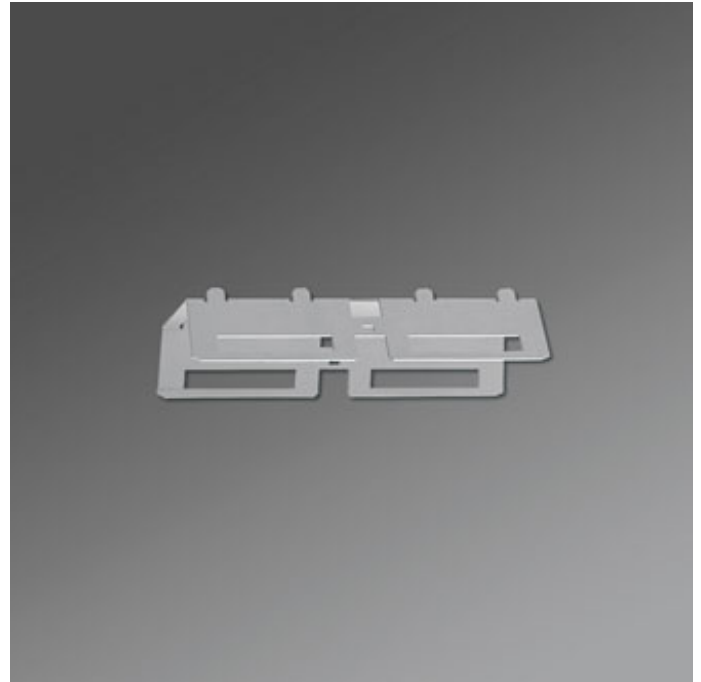


Category (ETIM):	Connectors
Type:	Mounting rail connector SDTVL
Order number:	18200031100
Certifications:	IP 20, Indoor, CE
Colour of the housing:	metallic
Weight (net) (kg):	0.24
Dimensions LxWxH/DxH (mm):	204 x 60 x 44.3
mounting method:	Mounting rail system mounting
EAN-number:	4020863060740
Commodity code:	94059900

SDTVL - me - 18200031100



Connectors made of St.galv., detachable for SDT

Dimensions LxWxH/DxH (mm): 204 x 60 x 44.3
Certifications: IP 20, Indoor, CE

Regiolux GmbH
Type: SDTVL me
Article number: 18200031100
Product deep link:
<http://www.regiolux.de/de/article/18200031100>

Lighting technology

-
SDTVL