
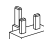
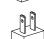
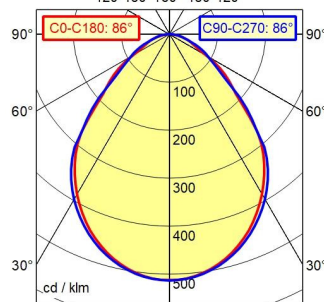


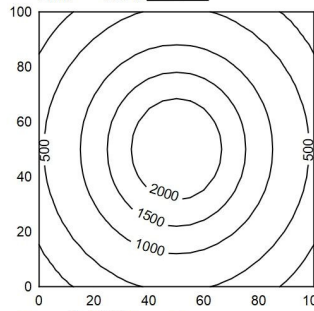
-  CEE 7/XVI
-  BS 1363 A
-  NEMA 1-15P

A50 | 100.0%       $\Phi$ : 1400 lm  
 UGR 4H 8H: 24.7 / 25.2  
 120° 150° 180° 150° 120°



100 x 100 cm       $\Phi$ : 1400 lm

Em: 1018 lx  
 Emax: 2435 lx  
 Emin: 227 lx



$\Phi$ : 1400 lm       $E_{0^\circ}$

Height (m)	Beam Angle	Luminance (lx)	Beam Width (m)
0.25	86°	11479	0.47   0.47
0.50	86°	2870	0.94   0.94
0.75	86°	1275	1.40   1.41
1.00	86°	717	1.87   1.88

- Light source**
- Work equipment**
- Connected load**
- Secondary tension**
- Power consumption**
- Sec. power consumption**
- Luminous flux**
- Luminous efficiency <sup>1)</sup>**
- Light type/-color**
- Colour temperatur**
- Color rendering index**
- Light distribution**
- Beam angle**
- Chromaticity tolerance LED**
- Glare control**
- Luminance (L65)**
- UGR class (4H 8H; EN 12464-1)**
- System of protection/Class**
- Technology**
- Operation**
- Housing**
- Light source cover**
- Arm**
- Balance of articulation joints**
- Mains lead**
- Fastening**
- EAN**
- Weight without/incl. packaging**
- Packaging dimensions**

- LED
- Electronic plug-in ballast
- 100 - 240 V; AC; 50 Hz; 60 Hz
- 24 V
- approx. 18 W
- approx. 15 W
- approx. 1.400 lm
- approx. 93 lm/W
- Cold white
- approx. 5.000 K
- CRI  $\geq$  90; R9  $\geq$  50
- Direct; Symmetric; approx. 100 %
- 86 °
- < 3 SDCM
- Diffuser
- $\leq$  17.000 cd/m<sup>2</sup>
- $\leq$  25
- IP 20; II with plug-in power supply, III without plug-in power supply
- Touch DIM
- Multi-function switch
- Untreated; Dusty grey
- Structured; Plastic
- Tubular aluminium section; Anodized; Aluminium coloured anodised
- Spring
- approx. 3,2 m; Mains plug; CEE 7/XVI; BS 1363 A; NEMA 1-15P
- Spigot  $\varnothing$ 16mm; Table clamp
- 4013330191818
- approx. 1,6
- approx. 865 mm; 420 mm; 102 mm

<sup>1)</sup> For luminaires with separate control gear, the luminous efficacy refers to the luminaire head without control g

# Arm-mounted luminaire ALD ALD 1300/950/D

113686000-00815669

