

Products /  **CASTALDI** / PASSO D44 / D44 PASSO B215 / D44K/B2-LWN-AL

## PASSO D44 D44K/B2-LWN-AL

### TECHNICAL DATA

#### GENERAL



Item code	D44K/B2-LWN-AL
Place installation	outdoor
Name	D44 PASSO B215 / D44K/B2-LWN-AL ground recessed
Note	5000K on request. DALI version on request.
Standard colour	AL - aluminium grey (similar to RAL 7040)
Variant colour	GR - graphite satin finish (similar to RAL 7022)
Environments	urban landscape, façades and architectural works, wellness, hallway, conference hall, places of worship, residential lighting



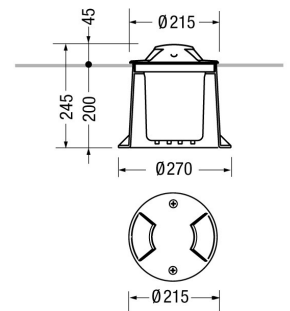
#### PHYSICAL

Installation type	ground recessed
Mounting type	with rough-in housing
Mounting note	On normally inflammable surfaces allowed.
Painting	Polyester powder coating, with a pluri-processed against corrosion (passed the exposure of over 1500 hours in a saline mist environment).
Screws	AISI 304 stainless steel screws.
Seals	Silicone Rubber.
Temperature glass	50°C
Static load	2000Kg
Body	Corrosion resistant die-cast aluminium body and dome.



#### DIMENSIONS

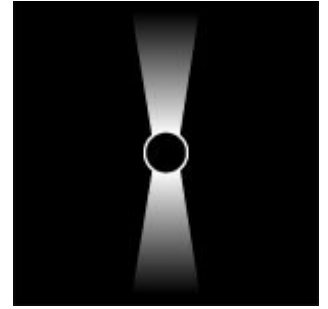
D: Total diameter device (mm)	215
Built-in shaped	Round



## OPTICAL SYSTEMS

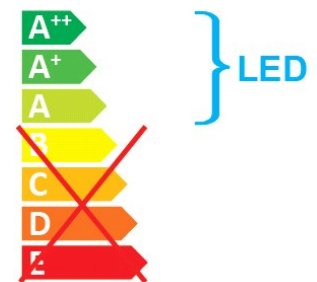
Opening beam  
Diffuser

diffused  
Unbreakable UV-resistant polycarbonate.



## ENERGY SAVING

This luminaire contains built-in LED lamps  
The lamps cannot be changed in the luminaire



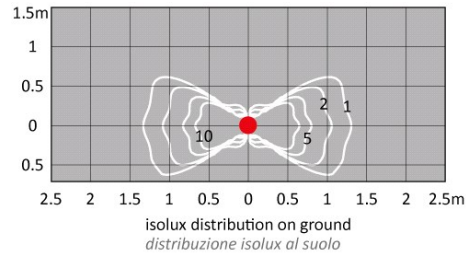
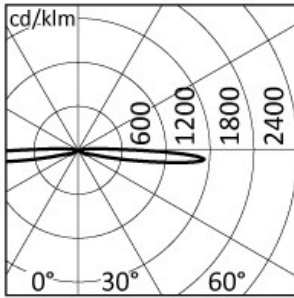
## SOURCES

Source Type	Source Power	System Power	Source	Lamp Socket	Sources Temperature Colour	Nominal Flux	Output Flux	MacAdam
LED	-	5W	-	-	4000K CRI>80	-	33 lm	Step 3

## ELECTRICAL

Ballast type	ON-OFF.
Mounting ballast type	Integral
Lifetime	50.000h L80B10 (Ta=25°C)
Line input	Pre-wired and tested with resin sealed watertight H07RN-F - H05RN-F (tellux/B2 model) cable (for a fast and secure connection to the main power line, use ACS/CR1 connector or similar).
Voltage	220-240V
Frequency	50-60Hz

## PHOTOMETRICS



## NORMS / DIRECTIVES

Norms	EN 60598-1, EN 60598-2-13
Directives	2014/35/UE, 2014/30/UE

## ACCESSORIES

### INCLUDED ACCESSORIES

#### **Rough-in housing**

Ground rough-in housing box, high impact resistant composite technopolymer (Code PT0838).



## OPTIONAL ACCESSORIES

### Electrical

**Accessory code** ACS/CR1

**Technical description**  
Fast IP68 connector 1bar (10m-1h) for cable Ø7-12mm - 3x1.5mm.



**Accessory code** ACS/CR6

**Technical description**  
4 ways IP68 wiring box for cable Ø5-14mm - 3x1,5mm.

