

Products /  **CASTALDI** / TELLUX D44 / D44 TELLUX T215 LED COB / D44K/T2-1LWW-MB-DD

TELLUX D44 D44K/T2-1LWW-MB-DD

TECHNICAL DATA

GENERAL



Item code	D44K/T2-1LWW-MB-DD
Place installation	outdoor
Name	D44 TELLUX T215 LED COB / D44K/T2-1LWW-MB-DD
Note	ground recessed
Standard colour	COB Chip On Board LED.
Environments	stainless steel frame sandblasted urban landscape, façades and architectural works, wellness, hallway, conference hall, places of worship, residential lighting



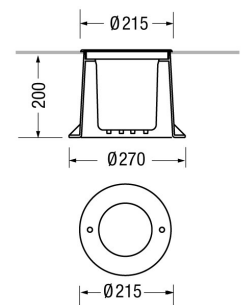
PHYSICAL

Installation type	ground recessed
Mounting type	with rough-in housing
Painting	Polyester powder coating, with a pluri-processed against corrosion (passed the exposure of over 1500 hours in a saline mist environment).
Screws	AISI 304 stainless steel screws.
Seals	Silicone Rubber.
Temperature glass	50°C
Static load	3500Kg
Body	Corrosion resistant die-cast aluminium body. High impact resistant composite technopolymer housing box. AISI 316 stainless steel frame sandblasted.



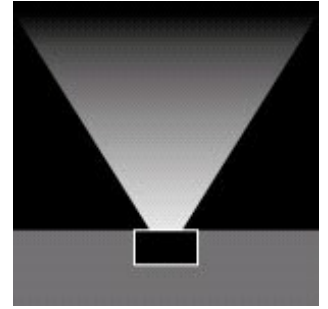
DIMENSIONS

D: Total diameter device (mm)	215
Built-in shaped	Round
Diameter built-in (mm)	270
Built-in depth (mm)	200
Weight (kg)	4
Volume piece packed (m3)	0,018



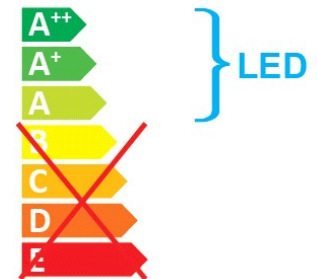
OPTICAL SYSTEMS

Opening beam	medium
Tilt	Fixed optic
Optical System	PC with aluminium coating reflector.
Diffuser	Tempered safety glass - 10 mm thickness, mechanical and thermal shock resistant.



ENERGY SAVING

This luminaire contains built-in LED lamps
The lamps cannot be changed in the luminaire



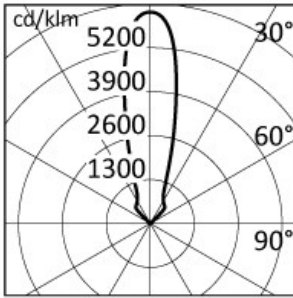
SOURCES

Source Type	Source Power	System Power	Source	Lamp Socket	Sources Temperature Colour	Nominal Flux	Output Flux	MacAdam
LED COB	-	13W	-	-	3000K CRI>80	-	1300 lm	Step 3

ELECTRICAL

Ballast type	DALI.
Mounting ballast type	Integral
Lifetime	50.000h L80B10 (Ta=25°C)
Line input	Pre-wired and tested with resin sealed watertight H07RN-F five poles cable.
Voltage	220-240V
Frequency	50-60Hz

PHOTOMETRICS



h (m)	Ø (m)	$\gamma=0.0$ $\alpha=\beta=32'$	Emed(lx)
10.00	5.78		19
8.00	4.62		29
6.00	3.47		51
4.00	2.31		116
2.00	1.16		463

NORMS / DIRECTIVES

Norms	EN 60598-1, EN 60598-2-13
Directives	2014/35/UE, 2014/30/UE

ACCESSORIES

OPTIONAL ACCESSORIES

Electrical

Accessory code ACS/FX05

Technical description 3 ways IP68 wiring box for DALI looping connection.



Accessory code ACS/CR7

Technical description IP68 connector plug and socket terminal for cable Ø7-12mm - 5x0,5-1,5mm².

Optical

Accessory code D44/T2-HLC

Technical description Honeycomb anti-glare louver for TELLUX T215 COB.