

PASSO D44 / D44 PASSO F215 / PASSO F215-LW LED / D44K/F2-LWW-AL

Product Info

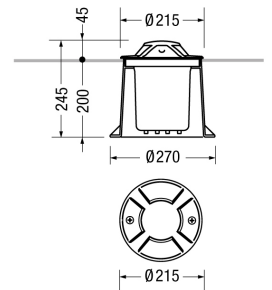


Item code	PASSO D44 / D44K/F2-LWW-AL
Category	Walk-over
Environments	urban landscape, façades and architectural works, wellness, hallway, conference hall, places of worship, residential lighting
Mounting type	with rough-in housing
Mounting note	On normally inflammable surfaces allowed.
Body	Corrosion resistant die-cast aluminium body and dome.
Painting	Polyester powder coating, with a pluri-processed against corrosion (passed the exposure of over 1500 hours in a saline mist environment).
Screws	AISI 304 stainless steel screws.
Seals	Silicone Rubber.
Static load	2000Kg
Standard Colour	AL aluminium grey
Option colors	GR graphite satin finish



Dimensions

D: Total diameter device (mm) 215

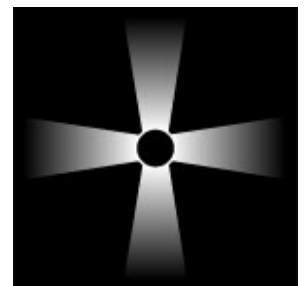


Included Accessories

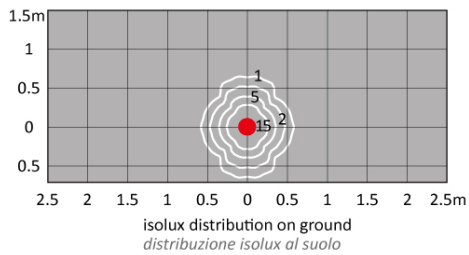
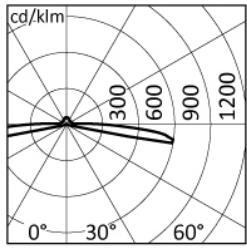
Rough-in housing Ground rough-in housing box, high impact resistant composite technopolymer (Code PT0838).

Optical System

Diffuser	Unbreakable UV-resistant polycarbonate.
Beam	diffuse
Emission	4 emissions
Adjustable	No



Photometrics



Sources

MacAdam	Step 3
Output Flux	68 lm
Source type	LED
System power	10W
Temperature Colour	3000K CRI>80

Electrical

Ballast type	ON-OFF.
Frequency	50-60Hz
Lifetime	50.000h L80B10 (Ta=25°C)
Line input	Pre-wired and tested with resin sealed watertight H07RN-F - H05RN-F (tellux/F2 model) cable (for a fast and secure connection to the main power line, use ACS/CR1 connector or similar).
Mounting ballast type	Integral
Voltage	220-240V
Separate ignition	No
Emergency 1E	No
Emergency 3E	No

Optional Accessories

Electrical

**ACS/CR1**

Fast IP68 connector 1bar (10m-1h) for cable Ø7-12mm - 3x1.5mm.

**ACS/CR6**

4 ways IP68 wiring box for cable Ø5-14mm - 3x1,5mm.