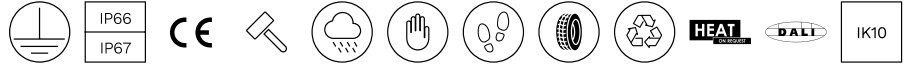


TELLUX LARGE D44 / D44 TELLUX T315 VOLVENDO 9LED / TELLUX LARGE T315 VOLVENDO 9LED SB / D44K/T3-9VLWW-SB-DD

Product Info

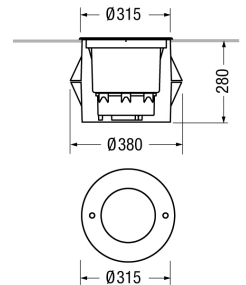


Item code	TELLUX LARGE D44 / D44K/T3-9VLWW-SB-DD
Category	Walk-over
Environments	urban landscape, façades and architectural works, wellness, hallway, conference hall, places of worship, residential lighting
Mounting type	with rough-in housing
Body	Corrosion resistant die-cast aluminium body. High impact resistant composite technopolymer housing box. AISI 316 stainless steel frame sandblasted.
Painting	Polyester powder coating, with a pluri-processed against corrosion (passed the exposure of over 1500 hours in a saline mist environment).
Screws	AISI 304 stainless steel screws.
Seals	Silicone Rubber.
Static load	5000Kg
Standard Colour	IS stainless steel frame sandblasted



Dimensions

Weight (kg)	8.8
D: Total diameter device (mm)	315
Volume piece packed (m³)	0.046

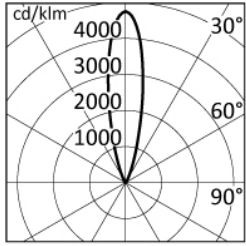


Optical System

Optical System	Tempered safety glass - 12 mm thickness, mechanical and thermal shock resistant.
Beam	medium
Emission	direct
Adjustable	Yes
Tilt	±15° VOLVENDO



Photometrics



h (m)	∅ (m)	$\gamma=0.0$ $\alpha=\beta=23^\circ$	Emed (lx)
10.00	4.02		35
8.00	3.22		54
6.00	2.41		97
4.00	1.61		218
2.00	0.80		872

Sources

MacAdam	Step 3
Output Flux	1267 lm
Source type	LED
System power	22,4W
Temperature Colour	3000K CRI>80

Electrical

Ballast type	DALI.
Frequency	50-60Hz
Lifetime	50.000h L80B10 (Ta=25°C)
Line input	Pre-wired and tested with resin sealed watertight H07RN-F five poles cable.
Mounting ballast type	Integral
Voltage	220-240V
Separate ignition	No
Emergency 1E	No
Emergency 3E	No

Optional Accessories

Electrical

ACS/CR7

IP68 connector plug and socket terminal for cable $\varnothing 7-12\text{mm} - 5 \times 0,5-1,5\text{mm}^2$.



ACS/FX05

3 ways IP68 wiring box for DALI looping connection.

Optical

D44/3-HLV

Honeycomb anti-glare louver for TELLUX LARGE T315/Q315 VOLVENDO.