

Products /  **CASTALDI** / TEMA D67 / D67 TEMA CITY / D67/CE2-LWN-4RA-GR

TEMA D67 D67/CE2-LWN-4RA-GR

TECHNICAL DATA

GENERAL



Item code	D67/CE2-LWN-4RA-GR
Place installation	outdoor
Name	D67 TEMA CITY / D67/CE2-LWN-4RA-GR pole mounted, wall mounted
Note	Pole and pole mounting joint are accessories to be ordered separately.
Standard colour	GR - graphite satin finish (similar to RAL 7022)
Environments	urban landscape, street lighting
Designer	Sardellini Marasca Architetti



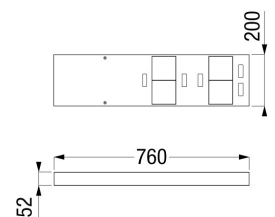
PHYSICAL

Installation type	pole mounted, wall mounted
Mounting type	pole, surface
Mounting note	Installation with quick connector IP67 integrated. Pole and pole mounting joint are accessories to be ordered separately.
Painting	Polyester powder coating, with a pluri-processed against corrosion (passed the exposure of over 1500 hours in a saline mist environment).
Screws	AISI 304 stainless steel screws.
Body	Housing made of extruded aluminium powder-coated. Die-Cast aluminum end caps painted in the same colour as the housing.



DIMENSIONS

A: Total width device (mm)	200
L: Total length device (mm)	760
H: Total height device (mm)	52



OPTICAL SYSTEMS

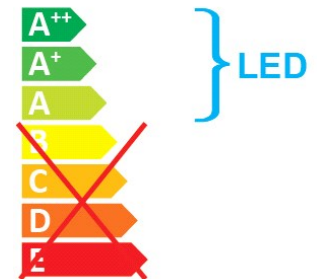
Opening beam
Optical System

RA2 - ROAD ASYMMETRIC SIDE 2
SLED optical system with secondary lenses in
PMMA, PC protection diffuser with surface treatment
scratch-resistant and anti-aging UV rays.



ENERGY SAVING

This luminaire contains built-in LED lamps
The lamps cannot be changed in the luminaire



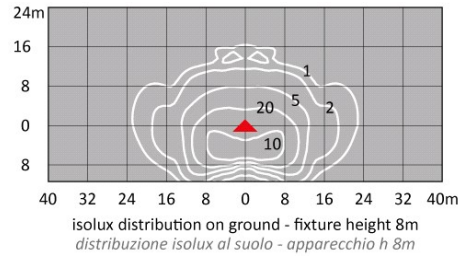
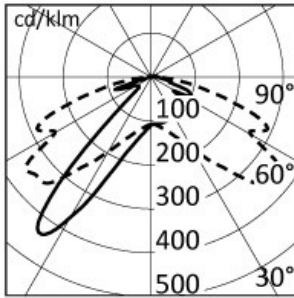
SOURCES

Source Type	Source Power	System Power	Source	Lamp Socket	Sources Temperature Colour	Nominal Flux	Output Flux	Source description
SLED SQUARE	-	83W	LED	-	4000K CRI>80	-	7636 lm	-

ELECTRICAL

Ballast type	Electronic, mains voltage spikes protection up to 4KV. Automatic night power reduction upon request.
Mounting ballast type	Integral
Line input	Use only (EN 60598-1) a two core H07RN-F rubber cable with diameter between 7,5 and 12mm.
Voltage	220-240V
Frequency	50-60Hz

PHOTOMETRICS



NORMS / DIRECTIVES

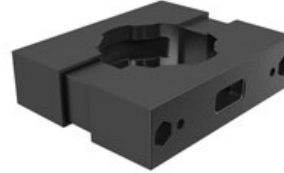
Norms	EN 60598-1, EN 60598-2-3
Directives	2014/35/UE, 2014/30/UE

ACCESSORIES

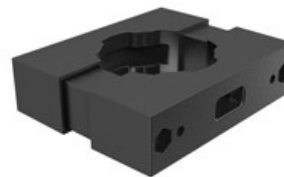
OPTIONAL ACCESSORIES

Mounting

Accessory code	D67/GA1-GR
Technical description	Pole connection. Suitable for one fixture Tema City on conical or cylindrical poles with diameters 76 or 102mm. Powder painting after passivation -GR GRAPHITE. AISI 304 stainless steel hardware.



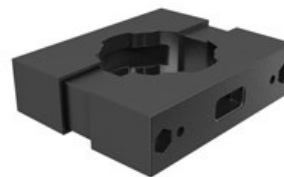
Accessory code	D67/GA2-GR
Technical description	Pole connection. Suitable for two fixtures Tema City on conical or cylindrical poles with diameters 76 or 102mm. Powder painting after passivation -GR GRAPHITE. AISI 304 stainless steel hardware.



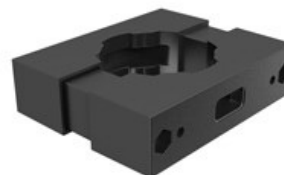
Accessory code	D67/B-GR
Technical description	Adjustable fixing base, for all wall mounted Tema City fixtures on pole connection for conical or cylindrical poles, and for rectangular pole at half-height (D67/PID ..., D67/PPD ...). It allows the $\pm 15^\circ$ inclination of the luminaire. -GR GRAPHITE



Accessory code	D67/GA3-GR
Technical description	Pole connection. Suitable for one fixture Tema City on conical or cylindrical poles with diameters between 60 and 63mm. Powder painting after passivation -GR GRAPHITE. AISI 304 stainless steel hardware.

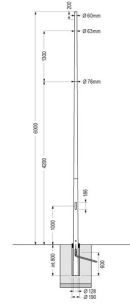


Accessory code	D67/GA4-GR
Technical description	Pole connection. Suitable for two fixtures Tema City on conical or cylindrical poles with diameters between 60 and 63mm. Powder painting after passivation -GR GRAPHITE. AISI 304 stainless steel hardware.

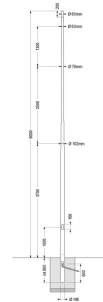


Pole

Accessory code	ACS/PCI-600-AL
Technical description	Cone-shaped pole upper Ø60mm, height above ground level 6m. Complete with Class II 4x16mm² shunt terminal block. Hot zinc coated and painted -AL ALUMINIUM.
H: Total height device (mm)	6000



Accessory code	ACS/PCI-800-AL
Technical description	Cone-shaped pole upper Ø60mm, height above ground level 8m. Complete with Class II 4x16mm² shunt terminal block. Hot zinc coated and painted -AL ALUMINIUM.
H: Total height device (mm)	8000



Accessory code	ACS/PRI-450-AL
Technical description	Tapered pole, upper section diameter 60mm, height above ground level 4.5m. Complete with Class II 4x16mm² shunt terminal block. Hot zinc coated and painted -AL ALUMINIUM.
H: Total height device (mm)	4500

