

GUELL 1 C/I



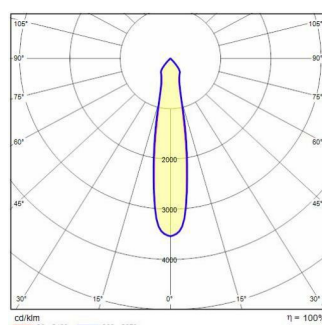
Part number	3115045
Lampholder:	LED
Light source:	LED
Wattage:	39 W
Finishing:	GR-94 / Metallic grey / Textured
Insulation class:	I
IP degree of protection:	IP66
IK-J-xxIP:	IK07 3J xx5
CRI:	70
Colour temperature:	5000
Power factor / COS Φ:	0.9
Optic:	Circular Intensive optics
Lightsource lumen output (lm):	6280 lm
Luminaire lumen output (lm):	5956 lm
L:	L90
B:	B20
Lifetime:	120000 h
Min. ambient temperature (°C):	-20
Max. ambient temperature (°C):	40
IPEA* (road lighting):	A9+
IPEA* (large areas, roundabouts):	A10+
IPEA* (cycle-pedestrian):	A9+
IPEA* (green areas):	A9+
IPEA* (historic city centers):	A14+
Luminous Intensity Class:	G*6



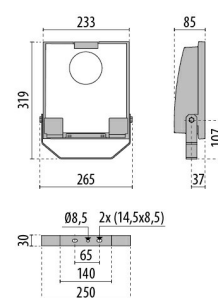
Description

- LED floodlight for indoor and outdoor, comprising:
- Die-cast aluminium housing, polyester powder coat finish ISO 9227/12944 - ISO 9223 (C5)
 - Extra clear, toughened, flat glass diffuser
 - High-performance polished, oxidised, iridescence-free, aluminium reflector (Al 99.99)
 - Anti-ageing custom moulded silicone sealing gasket(s)
 - Cable gland M20x1.5 for cables Ø 10- Ø 14 mm
 - Stainless steel locking hardware
 - Fully integrated stainless steel aluminium spring clips
 - Powder-coated steel tiltable bracket
 - Openable and maintainable luminaire (future-proof)
 - Dimmable ballast available. Consult factory
 - Other colour temperatures (CCT) and colour rendering index (CRI) options available.
- Consult factory
- Photometric data measure according to UNI EN 13032-4 and IES LM-79-08
 - Design by GIORGIO LODI

Photometric data

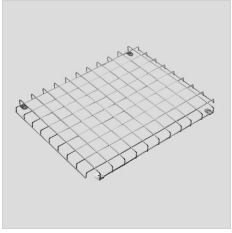


Technical drawings



OPTIONAL ACCESSORIES

GUELL 1



14172902
Protective grid GUELL 1



14174220
Connection box IP 66



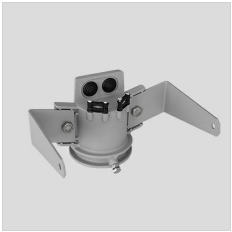
14173394
Wall support 500 mm/19.69" GUELL
1/2

Metallic grey



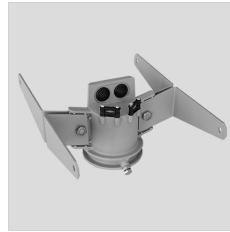
14173494
Wall support 1000 mm/39.37" GUELL
1/2

Metallic grey



14453194
Single pole top support GUELL 1

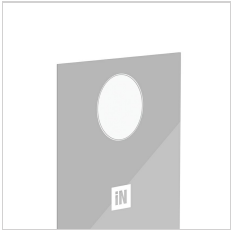
Metallic grey



14453294
Double pole top support GUELL 1

Metallic grey

GUELL 1 C/I



14476594
GUELL 1 C/I frosted glass

Metallic grey

