

## HORO 1000 A/M



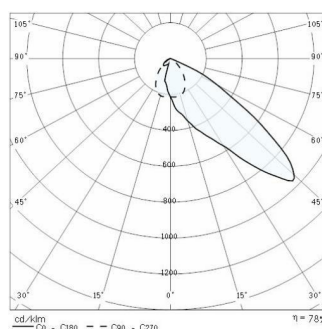
<b>Part number</b>	04023094
<b>Lampholder:</b>	E40
<b>Light Source:</b>	HIGH-PRESSURE SODIUM LAMPS
<b>Wattage:</b>	1x1000 W
<b>Finish:</b>	GR-94 / Metallic grey / Textured
<b>Insulation class:</b>	I
<b>Degree of protection:</b>	IP 65
<b>IK-J-xxIP:</b>	IK09 12J xx7
<b>Optic:</b>	ASYMMETRIC MEDIUM REFLECTOR
<b>Ta MIN luminaire:</b>	-25°
<b>Ta MAX luminaire:</b>	40°



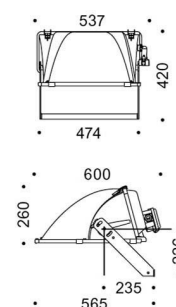
### Description

- Discharge lamp floodlight for indoor and outdoor lighting, comprising:
- Die-cast aluminium housing chemically pre-treated and painted with polyester powder coating
  - Flat extra clear tempered glass diffuser
  - Extra pure polished aluminium reflectors
  - Anti-ageing silicone gasket
  - Automatic line isolator switch in LCP
  - Electrical connection box in black technopolymer
  - Ceramic lamp supports with stainless steel check spring
  - Stainless steel locking springs for the glass
  - Stainless steel external screws
  - Fully integrated stainless steel safety spring clips
  - Mounting bracket in hot dip galvanised steel
  - Patented anti-vacuum device
  - Adequate power supply units, available as accessories, must be used for all floodlights

### PHOTOMETRIC DATA



### TECHNICAL DRAWINGS



## CONTROL GEAR

### HORO 1000 HQI-TS D/S / MHN-LA / MHN-FC / ST



14013320  
Aluminium power supply unit IP65, 230 V - 50 Hz, class I, for 1000W high pressure sodium and metal halide lamps with fuse and without ignitor



14215003  
Power supply unit with aluminium base and polyamide cover IP65, 230 V - 50 Hz, class I, for 1000 W high pressure sodium and metal halide lamps with fuse and without ignitor



14020701  
Power supply unit 230 V - 50Hz, class I, on galvanised steel plate for high pressure sodium and metal halide lamps with fuse and without ignitor



14260003  
Set includes power supply unit and power-factor capacitor for 1000W high pressure sodium and metal halide lamp, 230V 50 Hz

## OPTIONAL ACCESSORIES

### HORO



14090394  
External cowl in sheet aluminium, provides full cut off with peak beam max 55° and reduces upward light pollution.



14090494  
External cowl in sheet aluminium, provides full cut off with peak beam max 60° and reduces upward light pollution.



14090594  
External cowl in sheet aluminium, provides full cut off with peak beam max 65° and reduces upward light pollution.



14090202  
Long mounting bracket in hot dipped galvanised steel suitable for use when mounting one floodlight above another to avoid interference of light distribution.



14159204  
Horo viewfinder