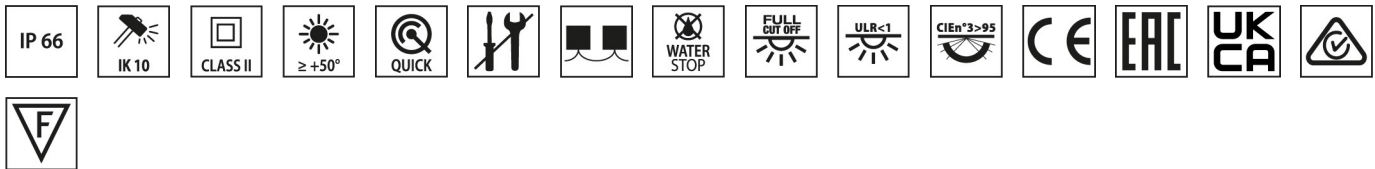
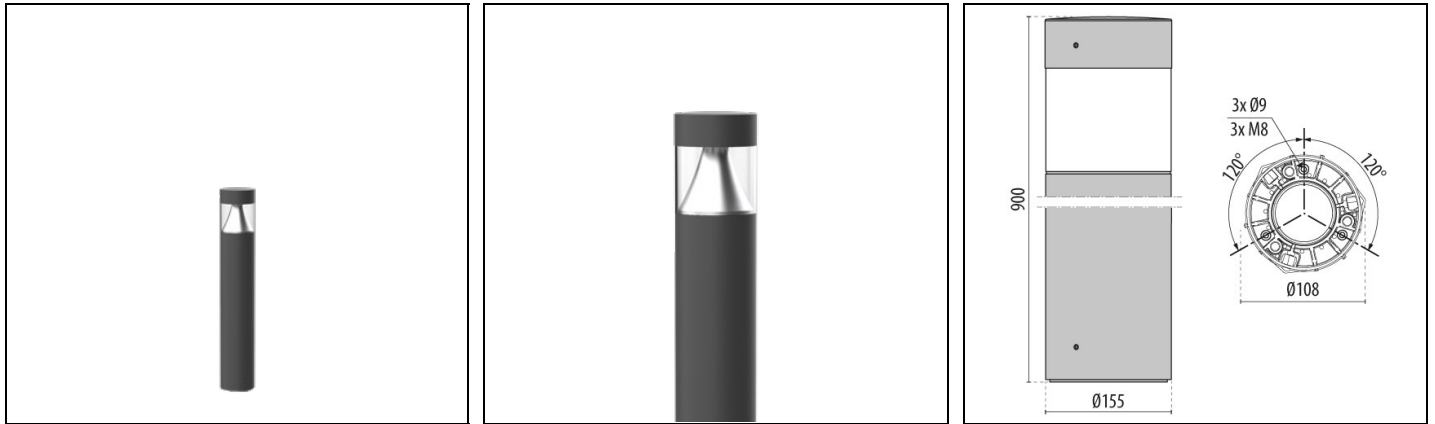


# KHA TECH 9 C/EW

Part number 3114001



## Description

Series of bollards, comprising:

- Extruded aluminium housing profile, powder-coated
- UV stabilised transparent polycarbonate diffuser
- UV and heat stabilised high-transparency polycarbonate optics. The optical unit compartment features superior heat dissipation and IK10-rated impact resistance grating specific light distributions
- Aluminium heat sink
- Anti-ageing custom moulded silicone sealing gasket(s)
- Technopolymer electrical gearbox
- IP68-rated, loop-through, technopolymer box (WATER-STOP), connected with factory pre-wired Ho7RN-F cable to the luminaire, for cables Ø 7 - 13.5 mm
- Stainless steel locking hardware
- Die-cast aluminium floor mount base polyester powder coat finish prior chemical surface conversion
- AISI 304 stainless steel sheet metal sturdy bases for floor mounting are available as accessories. For purpose illumination: promoting safe navigation through campuses, car parks and public spaces
- Concrete installation fixing rods are available as accessories. Compatible with standard die-cast aluminium and optional stainless steel heavy use (HU) baseplates
- Photometric data measure according to UNI EN 13032-4 and IES LM-79-08
- Design by SILVIA PAOLA PENNACCHIO

To maintain the regular updating of our products, PERFORMANCE iN LIGHTING reserves the right to make changes without prior notice. For the most up to date information we always recommend you read the latest version published on the website [www.performanceinlighting.com](http://www.performanceinlighting.com). Delivered luminaire lumen outputs and power consumptions, including losses, are subject to a tolerance of +/- 7%, and unless otherwise stated the values apply to an ambient temperature of 25°C. Terms of warranty are available at [www.performanceinlighting.com/qr/qr/company/terms-and-conditions](http://www.performanceinlighting.com/qr/qr/company/terms-and-conditions)

## Product data

ETIM Group:	EG000027	ETIM Class:	EC000301
-------------	----------	-------------	----------

## General information

Lampholder:	LED	Light source:	LED
Lightsource lumen output [lm]:	2100	Luminaire lumen output [lm]:	1508
Luminaire wattage [W]:	15 W	Luminous efficacy [lm/W]:	101
CRI:	80	Colour temperature [K]:	3000
Colour / Finishing:	AN-g6 / Anthracite gray / Textured	IP degree of protection:	IP66
IK-J-xxIP:	IK10 24J xxg	Protection class:	II
Optic:	Circular Extra-Wide	Net weight [kg]:	7.4
Overall diameter [mm]:	155	Overall height [mm]:	900

## Mechanical features

Shape:	ROUND < 150 MM	Housing material:	Aluminium
Diffuser material:	PLASTIC	Glow wire test [°C]:	650 °C
Frontal exposed area [m <sup>2</sup> ]:	0.14	Lateral exposed area [m <sup>2</sup> ]:	0.14
Top exposed area [m <sup>2</sup> ]:	0.02		

## Electrical features

Voltage type:	AC	Input voltage [V AC]:	220/240
Input frequency [Hz]:	220-240V 0/50/60Hz	Power factor / COS Φ:	>0.9
Inrush current [A/μs]:	26 / 180	C10 1.5 mm <sup>2</sup> :	29
C16 2.5 mm <sup>2</sup> :	46	B10 1.5 mm <sup>2</sup> :	10
B16 2.5 mm <sup>2</sup> :	28		

## Installation

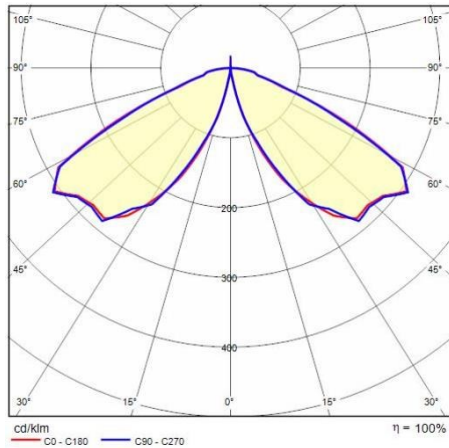
Application area:	Outdoor	Mounting type:	Bollards
Min. ambient temperature [°C]:	-25	Max. ambient temperature [°C]:	50
Min. distance from lighted object [m]:	0.50		

## Light features

MacAdam:	5	Lumen maintenance:	L80B10@220000h
Distribution of light emission:	Direct	Luminous Intensity Class:	G*6
Zero light pollution (ULR = 0%):		IPEA* (road lighting):	A+
IPEA* (large areas, roundabouts):	A++	IPEA* (cycle-pedestrian):	A+
IPEA* (green areas):	A+	IPEA* (historic city centers):	A4+

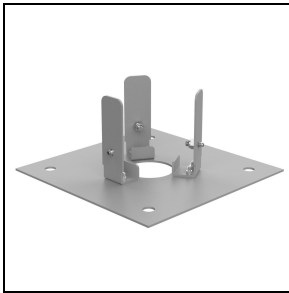
To maintain the regular updating of our products, PERFORMANCE iN LIGHTING reserves the right to make changes without prior notice. For the most up to date information we always recommend you read the latest version published on the website [www.performanceinlighting.com](http://www.performanceinlighting.com). Delivered luminaire lumen outputs and power consumptions, including losses, are subject to a tolerance of +/- 7%, and unless otherwise stated the values apply to an ambient temperature of 25°C. Terms of warranty are available at [www.performanceinlighting.com/qr/qr/company/terms-and-conditions](http://www.performanceinlighting.com/qr/qr/company/terms-and-conditions)

## Photometric data



## Optional accessories

### KHA TECH



#### 3114402

AISI 316 stainless steel floor installation base

■ INOX / Stainless steel



#### 3114401

AISI 316 stainless steel floor installation base

■ INOX / Stainless steel



#### 14049320

Concrete mounting adaptor with stainless steel plate and galvanised steel rods