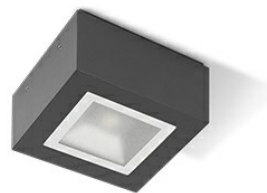
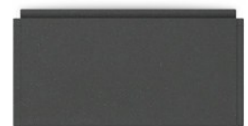


MIMIK 10 CEILING TECH



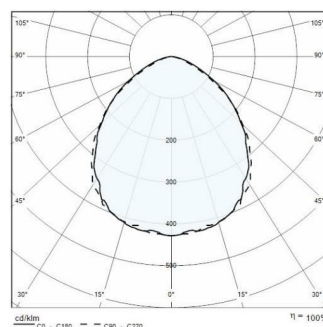
Part number	304877
Lampholder:	LED
Light Source:	LED
Wattage:	10 W
Finish:	AN-96 / Anthracite gray / Textured
Insulation class:	I
Degree of protection:	IP65
IK-J-xxIP:	IK06 1J xx3
CRI:	70
Kelvin:	3000
Power factor:	$\text{COS}\phi \geq 0,9$
Optic:	EXTRA WIDE CIRCLE REFLECTOR
Lightsource lumen output:	1040 lm
Luminaire lumen output:	701 lm
L:	L80
B:	B10
Lifetime:	60000 h
Ta MIN luminaire:	-20°
Ta MAX luminaire:	25°
ULR:	0%



Description

- Wall and ceiling mounted LED luminaire for indoor and outdoor applications, comprising:
- Polyester powder coated die-cast aluminium housing
 - Flat, microprismatic tempered glass diffuser, screen-printed on the inner surface
 - Silicone gasket
 - Powder polyester painting process optimized against UV rays in 13 different steps
 - Photometric data measure according to UNI EN 13032-4 and IES LM-79-08

Photometric data



Technical drawings

