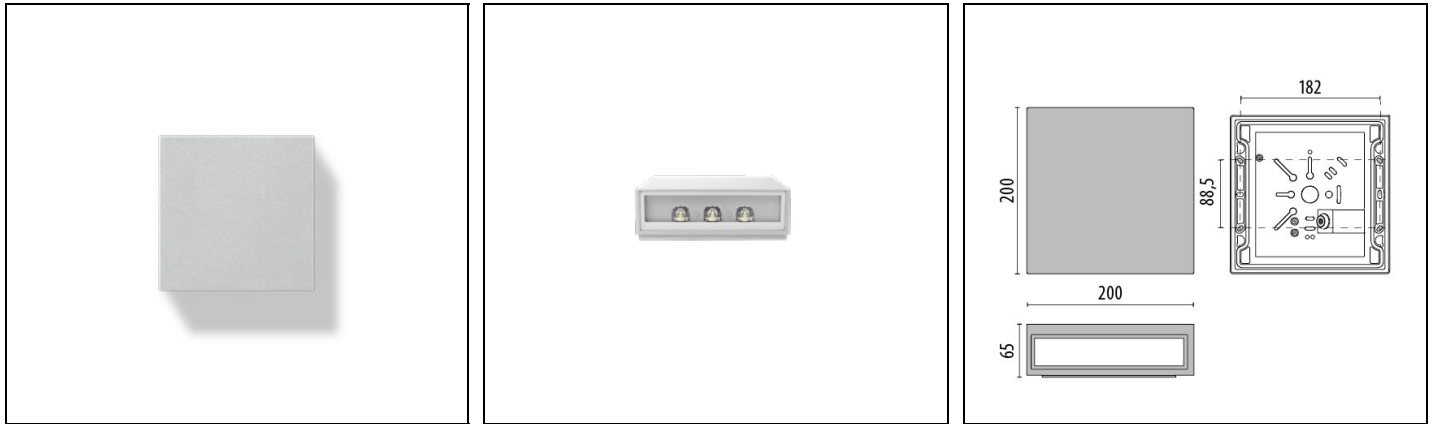


MIMIK 20 A60/W

Part number 304428



Description

Wall-mounted LED luminaire, comprising:

- Die-cast aluminium housing, polyester powder coat finish ISO 9227/12944 - ISO 9223 (C5)
- Anti-ageing custom moulded silicone sealing gasket(s)
- Microprismatic, toughened, flat glass diffuser, silk-screened on the inside (MIMIK FLAT versions)
- Single (M) and dual (B) emission versions available
- Extra-clear, toughened, flat glass diffuser, silk-screened on the inside (MIMIK models)
- MIMIK models are equipped with high-transmittance polycarbonate optics with different light distributions to meet a large variety of lighting schemes
- Optimised asymmetric distribution for wide spacing and lighting-class levels matching (CP options)
- Built-in driver
- Stainless steel locking hardware
- EM/3P version is designed for multipurpose 3 hours sustained emergency lighting
- Ni-Cd 3,6 V, 4 Ah batteries, 24 hours recharge time
- Openable and maintainable luminaire (future-proof)

Product data

ETIM Group:	EG000027	ETIM Class:	EC002892
-------------	----------	-------------	----------

General information

Lampholder:	LED	Light source:	LED
Lightsource lumen output [lm]:	2278	Luminaire lumen output [lm]:	1807
Luminaire wattage [W]:	21 W	Luminous efficacy [lm/W]:	86
CRI:	70	Colour temperature [K]:	3000
Colour / Finishing:	GR-94 / Metallic grey / Textured	IP degree of protection:	IP65
IK-J-xxIP:	IK06 1J xx3	Protection class:	1
Optic:	Asymmetric Wide	Net weight [kg]:	2
Overall length [mm]:	200	Overall width [mm]:	65
Overall height [mm]:	200		

Mechanical features

Shape:	Rectangular	Housing material:	Aluminium
Diffuser material:	Glass		

Electrical features

Voltage type:	AC	Input voltage [V AC]:	220/240
Input frequency [Hz]:	50/60	Power factor / COS Φ :	>0.9
Inrush current [A/ μ s]:	5 / 70	C10 1.5 mm ² :	41
C16 2.5 mm ² :	66	B10 1.5 mm ² :	27
B16 2.5 mm ² :	44		

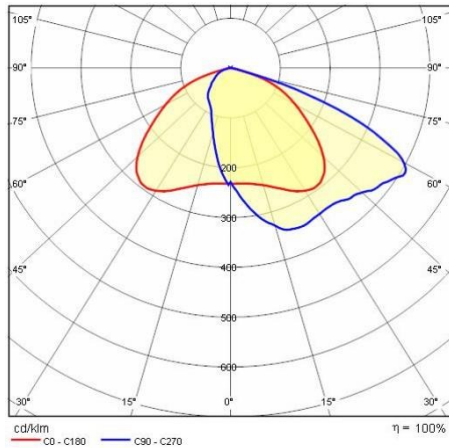
Installation

Application area:	Outdoor	Mounting type:	Wall surface
Min. ambient temperature [°C]:	-20	Max. ambient temperature [°C]:	35

Light features

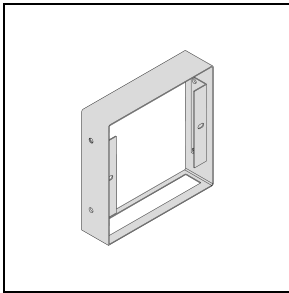
MacAdam:	3	Lumen maintenance:	L80B10@60000h
Distribution of light emission:	Direct	Zero light pollution (ULR = 0%):	

Photometric data



Optional accessories

MIMIK CP/T2 - CP/T3 - A60/W



310444

Customising ring / Facade Accessory