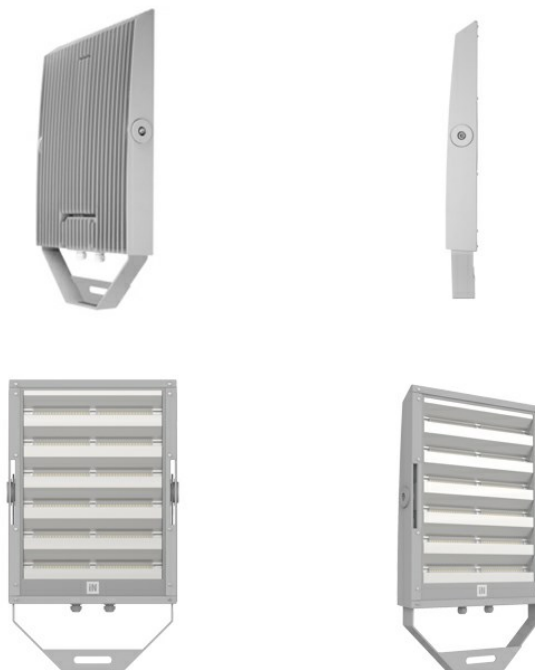


SQUARE PRO GLASS 710/3 A50/W



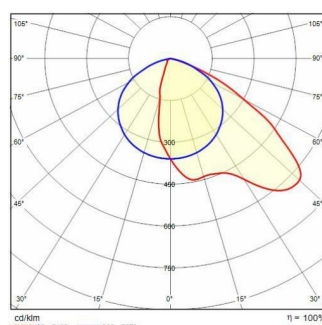
Part number	3104801
Lampholder:	LED
Light Source:	LED
Wattage:	710 W
Finish:	GR-94 / Metallic grey / Textured
Insulation class:	I
Degree of protection:	IP66
IK-J-xxIP:	IK07 3J xx5
CRI:	70
Kelvin:	4000
Optic:	Asymmetric wide reflector
Lightsource lumen output:	113616 lm
Luminaire lumen output:	102827 lm
L:	L80
B:	B10
Lifetime:	71000 h
Ta MIN luminaire:	-40°
Ta MAX luminaire:	50°
ULR:	0%
IPEA* (Street Lighting):	A3+
IPEA* (Area Lighting):	A6+
IPEA* (Cycle/Pedestrian Lighting):	A4+
IPEA* (Green Areas):	A4+
IPEA* (Historical Areas):	A8+
Luminous Intensity Class:	G*6



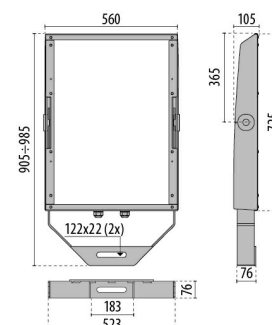
Description

- LED floodlight for indoor and outdoor lighting, comprising:
- Polyester powder coated ISO 9227 die-cast aluminium housing
 - Extra-clear flat tempered glass diffuser internally screen-printed
 - Very high performance reflectors made of 99.99% plated aluminium, polished, oxidised and free of iridescence
 - C / I version with high-efficiency technopolymer aluminised reflectors and protective surface treatment reflectors.
 - Gaskets made of silicone foam directly applied on glass without joints
 - Built-in electrical connection box with aluminium cover
 - Connection box in anti-ageing silicone gasket
 - Waterproof cable gland M25x1.5 for cables Ø 9- Ø 16 mm
 - Light beam obtained by the combination of multiple LED modules
 - The LED 4000 K and 3000 K CRI ≥ 70 versions are standard. Consult factory for other colour temperatures and colour renderings
 - Lens secured with powder-coated stainless steel clamps
 - Stainless steel external screws
 - Steel bracket, hot galvanised and painted in polyester powder
 - Graduated goniometer for aiming purposes
 - The SQUARE PRO output includes the losses of the power unit
 - To power SQUARE PRO GLASS use only the power supply units available as accessories
 - Match the projectors correctly with the respective power supply groups paying attention

Photometric data



Technical drawings



to the models and the number of connection channels: two channels (2CH) and three channels (3CH)

- ON-OFF and dimmable DALI and 1-10V power supply units in BOX watertight IP66 or on IP20 metal plates to be incorporated in waterproof electrical panels are available. The electrical connection between them and the relative projectors is up to 50 meters cable length.

- Integral surge protection device (SPD) against mains overvoltages up to 10 kV (CM and DM) for every driver unit/box.

- Photometric data measure according to UNI EN 13032-4 and IES LM-79-08

CONTROL GEAR

Drivers box IP66 - SQUARE PRO GLASS 710/3 - S/W - A50/W



3104813
Drivers box 750 W - 1.1A - 3CH - DALI
220-240 V 50/60 Hz

Metallic grey



3105744
Drivers box 750 W - 1.1A - 3CH - DALI -
380-415 V 50/60 Hz

Metallic grey



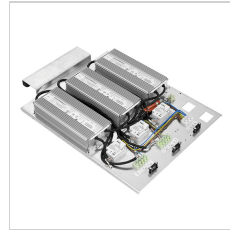
3105746
Drivers box 750 W - 1.1A - 3CH - 1-10 V -
380-415 V 50/60 Hz

Metallic grey

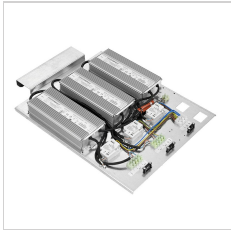
Drivers unit IP20 - SQUARE PRO GLASS 710/3 - S/W - A50/W



3104829
Drivers unit 750 W - 1.1A - 3CH - DALI
220-240 V 50/60 Hz



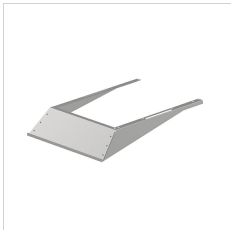
3105740
Drivers unit 750 W - 1.1A - 3CH - DALI -
380-415 V 50/60 Hz



3105742
Drivers unit 750 W - 1.1A - 3CH - 1-10 V
- 380-415 V 50/60 Hz

OPTIONAL ACCESSORIES

SQUARE PRO GLASS A50/W



3105479
Louvre SQUARE PRO GLASS A50/W

Metallic grey