



light source

work equipment
connected load
Power consumption
luminous flux
luminous efficacy
colour temperature
color rendering index (CRI)
System of protection
class of protection
operation
luminaire body

lamp cover
balance of articulation joints
weight (net)
mains lead

Fastening

special features

LED

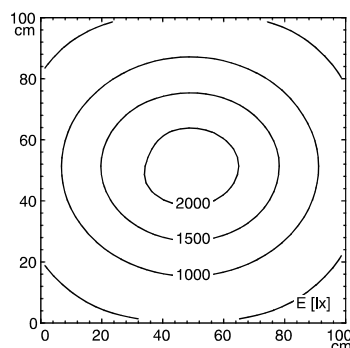
Energy efficiency category A/A+/A++
electronic transformer
100-240 V; 50/60 Hz
approx. 34 W
approx. 1800 lm
approx. 52 lm/W
neutral white, approx. 5000 K
≥ 80
IP20
I
multi-function switch
sectional aluminium, anodised, aluminium coloured
anodised
polycarbonate, white opal
spring
approx. 2.3 kg
approx. 3,4 m; mains plug
CEE 7/VII
screw-down flange, table clamp (accessory), wall bracket (accessory)
Ra (luminaire) ca. 90



CEE 7/VII

illuminance

distance: 50 cm
Em: 1082 lx
Emax: 2219 lx
Emin: 348 lx



luminous intensity

