

THEOS A/W



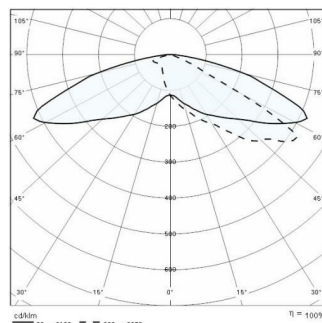
Part number	06216196
Lampholder:	LED
Light Source:	LED
Wattage:	170 W
Finish:	AN-96 / Anthracite gray / Textured
Insulation class:	II
Degree of protection:	IP66
IK-J-xxIP:	IK08 9J xx5
CRI:	70
Kelvin:	4000
Power factor:	COSφ ≥ 0,9
Optic:	Asymmetric Wide Reflector
Lightsource lumen output:	21520 lm
Luminaire lumen output:	17886 lm
L:	L80
B:	B10
Lifetime:	60000 h
Ta MIN luminaire:	-40°
Ta MAX luminaire:	40°



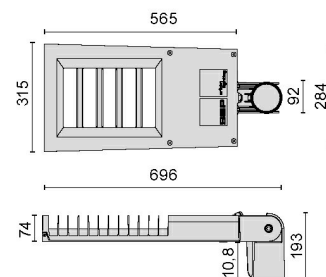
Description

- Series of LED street luminaires, comprising:
- Die-cast aluminium housing chemically pre-treated and painted with polyester powder coating
 - Die-cast aluminium pole-mounting joint, painted grey, for pole Ø 60 mm or 76 mm
 - Diffuser with integrated louvre in UV, heat stabilised, transparent technopolymer
 - High-transparency polycarbonate lenses for best light transmission
 - Asymmetrical optic
 - Anti-aging silicone gasket with high resiliency
 - Switch splitter automatically disconnects the power supply when the cable cover is opened
 - Cable gland M20x1.5 for cables Ø 10- Ø 14 mm
 - High efficiency electronic driver
 - Light beam obtained by the combination of multiple LED modules
 - Compliant with the UNI 10819 Standard and with the Italian regional laws on light pollution
 - Stainless steel external screws
 - The "SECURE LIGHT DISTRIBUTION" system guarantees uniform light distribution even in the remote case of LED failures
 - Replaceable LED module
 - 3000 K and 5000 K available upon request

Photometric data

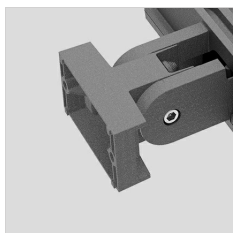


Technical drawings



OPTIONAL ACCESSORIES

THEOS



14174796
Wall mount bracket THEOS



14077796
Hot-dipped galvanized wall angled
steel bracket, cataphoresis and
polyester powder