

THEOS GLASS MINI SR/100 ZHAGA

Part number 3112853



Description

LED street luminaire, comprising:

- Die-cast aluminium housing, polyester powder coat finish ISO 9227/12944 - ISO 9223 (C5)
- Coated die-cast aluminium captive trim, hinged to the housing
- Coated die-cast aluminium pole-top adaptor for pole Ø 60 / 76 mm
- High-transparency polycarbonate optics
- The Secure Light Distribution (SLD) system guarantees uniform light distribution even in the remote case of LED failures
- Anti-ageing custom moulded silicone sealing gasket(s) with resilient elastic return capacity
- Extra clear, toughened, flat glass diffuser
- Built-in driver
- Integral surge protection device (SPD) against mains overvoltages up to 10 kV (CM/DM)
- Stainless steel locking hardware
- Complete with 1 m factory pre-wired cable Ho7RN-F 2x1.5 mm²
- UNI 10819 light pollution standards compliant (0% ULOR rating)
- Complete with ZHAGA socket positioned on the upper part of the luminaire (UP position) and D4i driver. Ready for "radio frequency node" smart, twilight and other compatible solutions (ZHAGA options). Consult factory for more options
- Upon request, luminaires can be provided with ZHAGA socket positioned in the lower part of the luminaire (DOWN position) or mixed (UP position + DOWN position) to be able to connect presence and/or motion detectors or combined solutions
- Other colour temperatures (CCT) and colour rendering index (CRI) options available. Consult factory
- Photometric data measure according to UNI EN 13032-4 and IES LM-79-08
- Design by SILVIA PAOLA PENNACCHIO

To maintain the regular updating of our products, PERFORMANCE iN LIGHTING reserves the right to make changes without prior notice. For the most up to date information we always recommend you read the latest version published on the website www.performanceinlighting.com. Delivered luminaire lumen outputs and power consumptions, including losses, are subject to a tolerance of +/- 7%, and unless otherwise stated the values apply to an ambient temperature of 25°C. Terms of warranty are available at www.performanceinlighting.com/qr/qr/company/terms-and-conditions

Product data

ETIM Group:	EG000027	ETIM Class:	EC000062
-------------	----------	-------------	----------

General information

Lampholder:	LED	Light source:	LED
Lightsource lumen output [lm]:	5091	Luminaire lumen output [lm]:	5064
Luminaire wattage [W]:	34 W	Luminous efficacy [lm/W]:	141
CRI:	70	Kelvin:	4000
Colour / Finish:	AN-g6 / Anthracite gray / Textured	IP degree of protection:	IP66
IK-J-xxIP:	IK08 gJ xx5	Insulation class:	II
Optic:	Street	Net weight [kg]:	6.5
Overall length [mm]:	280	Overall width [mm]:	506
Overall height [mm]:	195		

Mechanical features

Shape:	RECTANGULAR	Housing material:	Aluminium
Diffuser material:	GLASS	Glow wire test [°C]:	960 °C
Lateral exposed area [m ²]:	0.07	Top exposed area [m ²]:	0.17

Electrical features

Voltage type:	AC	Input voltage [V AC]:	220/240
Input frequency [Hz]:	50/60	Power factor / COS Φ:	0.9
Surge protection Common [kV]:	10.0	Surge protection Differential [kV]:	10.0
Inrush current [A/μs]:	26 / 180	C10 1.5 mm ² :	18
C16 2.5 mm ² :	28	B10 1.5 mm ² :	11
B16 2.5 mm ² :	17		

Installation

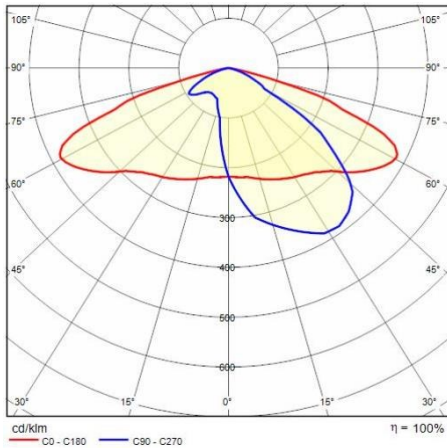
Application area:	Outdoor	Mounting type:	Street lighting
Min. ambient temperature [°C]:	-40	Max. ambient temperature [°C]:	50
Min. distance from lighted object [m]:	0.50		

Light features

MacAdam:	3	Lumen maintenance:	L90B10@100000h
Distribution of light emission:	Direct	Luminous Intensity Class:	G*4
Zero light pollution (ULR = 0%):		IPEA* (road lighting):	A8+
IPEA* (large areas, roundabouts):	A9+	IPEA* (cycle-pedestrian):	A7+
IPEA* (green areas):	A7+	IPEA* (historic city centers):	A12+

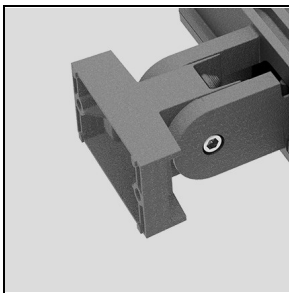
To maintain the regular updating of our products, PERFORMANCE iN LIGHTING reserves the right to make changes without prior notice. For the most up to date information we always recommend you read the latest version published on the website www.performanceinlighting.com. Delivered luminaire lumen outputs and power consumptions, including losses, are subject to a tolerance of +/- 7%, and unless otherwise stated the values apply to an ambient temperature of 25°C. Terms of warranty are available at www.performanceinlighting.com/qr/qr/company/terms-and-conditions

Photometric data



Optional accessories

THEOS GLASS



14174796

Wall mount bracket THEOS

■ AN-g6 / Anthracite gray



14077796

Hot-dipped galvanized wall angled steel bracket, cataphoresis and polyester powder

■ AN-g6 / Anthracite gray