

THEOS GLASS MINI SR/100 ZHAGA

Part number 3112857



Description

LED street luminaire, comprising:

- Die-cast aluminium housing, polyester powder coat finish ISO 9227/12944 - ISO 9223 (C5)
- Coated die-cast aluminium captive trim, hinged to the housing
- Coated die-cast aluminium pole-top adaptor for pole \varnothing 60 / 76 mm
- High-transparency polycarbonate optics
- The Secure Light Distribution (SLD) system guarantees uniform light distribution even in the remote case of LED failures
- Anti-ageing custom moulded silicone sealing gasket(s) with resilient elastic return capacity
- Extra clear, toughened, flat glass diffuser
- Built-in driver
- Integral surge protection device (SPD) against mains overvoltages up to 10 kV (CM/DM)
- Stainless steel locking hardware
- Complete with 1 m factory pre-wired cable Ho7RN-F 2x1.5 mm²
- UNI 10819 light pollution standards compliant (0% ULOR rating)
- Complete with ZHAGA socket positioned on the upper part of the luminaire (UP position) and D4i driver. Ready for "radio frequency node" smart, twilight and other compatible solutions (ZHAGA options). Consult factory for more options
- Upon request, luminaires can be provided with ZHAGA socket positioned in the lower part of the luminaire (DOWN position) or mixed (UP position + DOWN position) to be able to connect presence and/or motion detectors or combined solutions
- Other colour temperatures (CCT) and colour rendering index (CRI) options available. Consult factory
- Design by SILVIA PAOLA PENNACCHIO

Product data

| | | | |
|-------------|----------|-------------|----------|
| ETIM Group: | EG000027 | ETIM Class: | EC000062 |
|-------------|----------|-------------|----------|

General information

| | | | |
|--------------------------------|------------------------------------|------------------------------|------|
| Lampholder: | LED | Light source: | LED |
| Lightsource lumen output [lm]: | 9923 | Luminaire lumen output [lm]: | 9010 |
| Luminaire wattage [W]: | 58 W | Luminous efficacy [lm/W]: | 155 |
| CRI: | 70 | Colour temperature [K]: | 4000 |
| Colour / Finishing: | AN-g6 / Anthracite gray / Textured | IP degree of protection: | IP66 |
| IK-J-xxIP: | IK08 gJ xx5 | Protection class: | II |
| Optic: | Street | Net weight [kg]: | 6.6 |
| Overall length [mm]: | 506 | Overall width [mm]: | 280 |
| Overall height [mm]: | 195 | | |

Mechanical features

| | | | |
|---|-------------|-------------------------------------|-----------|
| Shape: | Rectangular | Housing material: | Aluminium |
| Diffuser material: | Glass | Glow wire test [°C]: | 650 °C |
| Lateral exposed area [m ²]: | 0.07 | Top exposed area [m ²]: | 0.17 |

Electrical features

| | | | |
|---------------------------------|----------|---------------------------------------|---------|
| Voltage type: | AC | Input voltage [V AC]: | 220/240 |
| Input frequency [Hz]: | 50/60 | Power factor / COS Φ: | >0.9 |
| Surge protection Common [kV]: | 10.0 | Surge protection Differential [kV]: | 10.0 |
| Inrush current [A/μs]: | 54 / 190 | C10 1.5 mm ² : | 11 |
| C16 2.5 mm ² : | 20 | B10 1.5 mm ² : | 8 |
| B16 2.5 mm ² : | 12 | | |

Installation

| | | | |
|--|---------|--------------------------------|-----------------|
| Application area: | Outdoor | Mounting type: | Street lighting |
| Min. ambient temperature [°C]: | -40 | Max. ambient temperature [°C]: | 50 |
| Min. distance from lighted object [m]: | 0.50 | | |

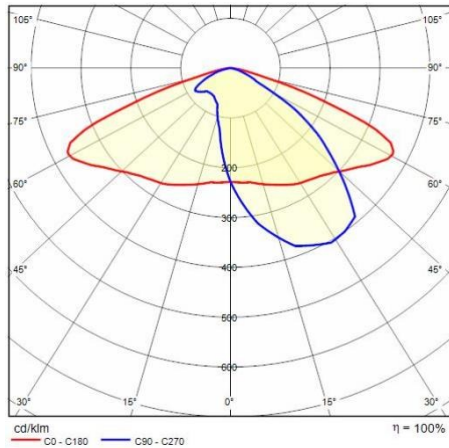
Light features

| | | | |
|-----------------------------------|--------|--------------------------------|----------------|
| MacAdam: | 3 | Lumen maintenance: | L90B10@100000h |
| Distribution of light emission: | Direct | Luminous Intensity Class: | G'2 |
| Zero light pollution (ULR = 0%): | | IPEA* (road lighting): | A8+ |
| IPEA* (large areas, roundabouts): | A9+ | IPEA* (cycle-pedestrian): | A8+ |
| IPEA* (green areas): | A8+ | IPEA* (historic city centers): | A12+ |

To maintain the regular updating of our products, PERFORMANCE IN LIGHTING reserves the right to make changes without prior notice. For the most up to date information we always recommend you read the latest version published on the website www.performanceinlighting.com. Delivered luminaire lumen outputs and power consumptions, including losses, are subject to a tolerance of +/- 7%, and unless otherwise stated the values apply to an ambient temperature of 25°C. Terms of warranty are available at <https://www.performanceinlighting.com/qr/company/led-warranty>

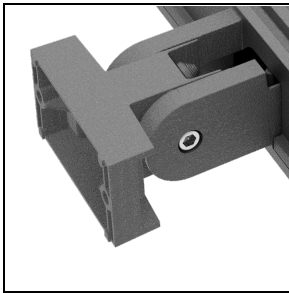
To maintain the regular updating of our products, PERFORMANCE iN LIGHTING reserves the right to make changes without prior notice. For the most up to date information we always recommend you read the latest version published on the website www.performanceinlighting.com. Delivered luminaire lumen outputs and power consumptions, including losses, are subject to a tolerance of +/- 7%, and unless otherwise stated the values apply to an ambient temperature of 25°C. Terms of warranty are available at <https://www.performanceinlighting.com/qr/company/led-warranty>

Photometric data



Optional accessories

THEOS GLASS



14174796

Wall mount bracket THEOS

■ AN-g6 / Anthracite gray



14077796

Hot-dipped galvanized wall angled steel bracket, cataphoresis and polyester powder

■ AN-g6 / Anthracite gray