

# WIN PRO 20 A/W

Part number 3114507



## Description

LED floodlight for indoor and outdoor, comprising:

- Die-cast aluminium housing, polyester powder coat finish ISO 9227/12944 - ISO 9223 (C5)
- Extra clear, toughened, flat glass diffuser
- High-transparency polycarbonate optics
- Anti-ageing custom moulded silicone sealing gasket(s) with resilient elastic return capacity
- Fully integrated PA66 fiberglass reinforced technopolymer trim hinged to the housing
- Cable gland M20x1.5 for cables Ø 10- Ø 14 mm
- Stainless steel locking hardware
- Powder-coated steel tiltable bracket
- Openable and maintainable luminaire (future-proof)
- Other colour temperatures (CCT) and colour rendering index (CRI) options available. Consult factory
- Photometric data measure according to UNI EN 13032-4 and IES LM-79-08

## Product data

ETIM Group:	EG000027	ETIM Class:	EC001744
-------------	----------	-------------	----------

## General information

Lampholder:	LED	Light source:	LED
Lightsource lumen output [lm]:	13088	Luminaire lumen output [lm]:	9356
Luminaire wattage [W]:	68 W	Luminous efficacy [lm/W]:	138
CRI:	70	Colour temperature [K]:	4000
Colour / Finishing:	GR-94 / Metallic grey / Textured	IP degree of protection:	IP66
IK-J-xxIP:	IK08 5J xx5	Protection class:	I
Optic:	Asymmetric Wide	Net weight [kg]:	3.427
Overall length [mm]:	267	Overall width [mm]:	341
Overall height [mm]:	68		

## Mechanical features

Shape:	RECTANGULAR	Housing material:	Aluminium
Diffuser material:	GLASS	Glow wire test [°C]:	960 °C
Frontal exposed area [m <sup>2</sup> ]:	0.02	Lateral exposed area [m <sup>2</sup> ]:	0.02
Top exposed area [m <sup>2</sup> ]:	0.09		

## Electrical features

Voltage type:	AC/DC	Input voltage [V AC]:	220/240
Input frequency [Hz]:	0/50/60	Power factor / COS Φ:	>0.9
Input voltage [V DC]:	170/264	Surge protection   Common [kV]:	10.0
Surge protection   Differential [kV]:	6.0	Inrush current [A/μs]:	41 / 238
C10 1.5 mm <sup>2</sup> :	10	C16 2.5 mm <sup>2</sup> :	17
B10 1.5 mm <sup>2</sup> :	6	B16 2.5 mm <sup>2</sup> :	10
EEL:	-		

## Installation

Application area:	Outdoor	Mounting type:	Floodlighting
Min. ambient temperature [°C]:	-40	Max. ambient temperature [°C]:	50
Min. distance from lighted object [m]:	0.50		

## Light features

MacAdam:	3	Lumen maintenance:	L80B10@250000h
Distribution of light emission:	Direct	Luminous Intensity Class:	G*6
Zero light pollution (ULR = 0%):		IPEA* (road lighting):	A7+

To maintain the regular updating of our products, PERFORMANCE iN LIGHTING reserves the right to make changes without prior notice. For the most up to date information we always recommend you read the latest version published on the website [www.performanceinlighting.com](http://www.performanceinlighting.com). Delivered luminaire lumen outputs and power consumptions, including losses, are subject to a tolerance of +/- 7%, and unless otherwise stated the values apply to an ambient temperature of 25°C. Terms of warranty are available at [www.performanceinlighting.com/qr/qr/company/terms-and-conditions](http://www.performanceinlighting.com/qr/qr/company/terms-and-conditions)

---

IPEA* (large areas, roundabouts):	A8+
-----------------------------------	-----

---

---

IPEA* (cycle-pedestrian):	A6+
---------------------------	-----

---

---

IPEA* (green areas):	A6+
----------------------	-----

---

---

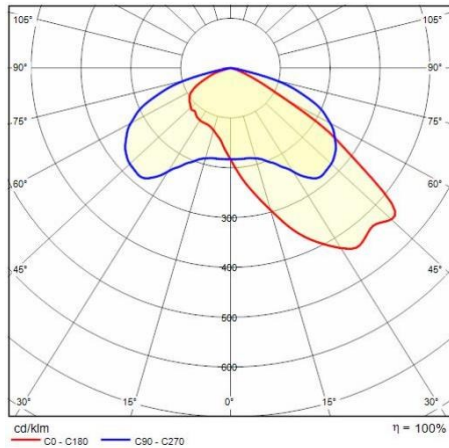
IPEA* (historic city centers):	A12+
--------------------------------	------

---

---

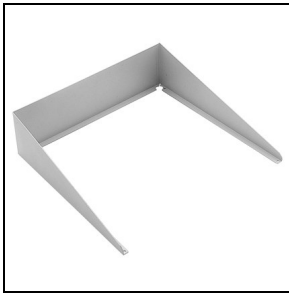
To maintain the regular updating of our products, PERFORMANCE iN LIGHTING reserves the right to make changes without prior notice. For the most up to date information we always recommend you read the latest version published on the website [www.performanceinlighting.com](http://www.performanceinlighting.com). Delivered luminaire lumen outputs and power consumptions, including losses, are subject to a tolerance of +/- 7%, and unless otherwise stated the values apply to an ambient temperature of 25°C. Terms of warranty are available at [www.performanceinlighting.com/qr/qr/company/terms-and-conditions](http://www.performanceinlighting.com/qr/qr/company/terms-and-conditions)

## Photometric data



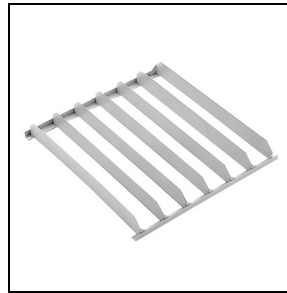
## Optional accessories

## WIN PRO 20

**14043194**

External steel cowl painted aluminium grey

■ GR-94 / Metallic grey

**14043294**

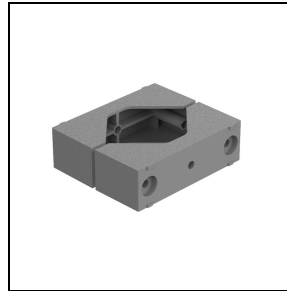
External anti-glare louvre painted aluminium grey

■ GR-94 / Metallic grey

**14048104**

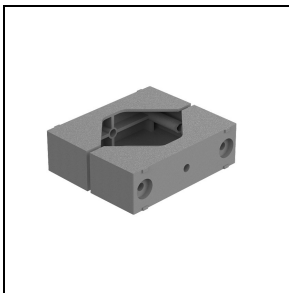
Wspornik montażowy ze stali nierdzewnej

■ INOX / Stainless steel

**14029094**

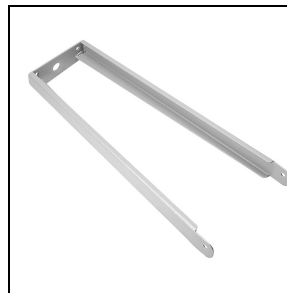
Gliding support made of painted aluminium for the installation on 60-76 mm Ø posts. 1 luminaire

■ GR-94 / Metallic grey

**14047194**

Gliding support made of painted aluminium for the installation on 60-76 mm Ø posts. 2 opposed luminaires

■ GR-94 / Metallic grey

**14043394**

500 mm wall mounting extension arm in sheet steel painted aluminium grey

■ GR-94 / Metallic grey