

Luminaire with a higher protection rating IP65 - Opal diffuser - direct/indirect distribution

Ceiling-wall and pendant mounting; Housing made of polycarbonate, captive diffuser fastening clips made of stainless steel, cable entries with cable gland M20 in accordance with the protection rating on the end faces, suspension wires to make installation easier; Housing colour light grey; Deep-drawn polycarbonate diffuser with opal-prismatic, smooth surface. Integrated driver. Electrical connection via 3-pole connection terminal with plug-in contacts. 2 variable fastening clips of stainless steel and suspension bracket for luminaire mounting also included in the scope of delivery. Swivel mounting bracket SBB to be ordered separately.

CHARACTERISTICS

Order number	50135404115
EAN number	4020863447060
Commodity code	94051140
Certification mark	IP 65, Protection class I, F, D, HACCP DIN10500/Food/IFS/BRC, Indoor, CE
Impact resistance (IK rating)	IK08 (-20°C bis 35°C)
Ambient temperatur	ta -20°C to 35°C

DEEP-LINK

<https://www.regiolum.de/en/article/50135404115>

ELECTRICAL ENGINEERING

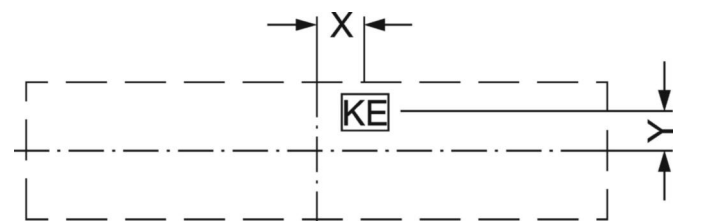
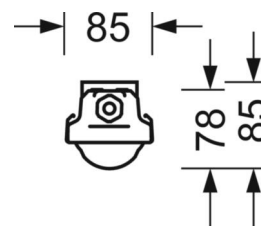
Controller	Electronic multi-lumen driver, 4-steps (1 pcs.)
Wiring	3x1.5mm ² , throughwired, plug-in contact for 3x2.5qmm
System output	43W-26W
Mains voltage	230V/50Hz
Circuit breakers/number	31 pieces/B10, 50 pieces/B16, 52 pieces/C10, 85 pieces/C16

LIGHTING TECHNOLOGY

Placement	LED, Colour rendering/Light colour CRI ≥ 80 / 4000K
Colour tolerance (MacAdam)	4SDCM
Photobiological safety (Luminaire)	RG1
Luminous flux switching levels (ETM)	6200lm/43W, 5400lm/37W, 4800lm/32W, 3900lm/26W (standard setting 6200lm)
LED service life	50000h L70/B10 (Tq 35°C), 50000h L80/B50 (Tq 25°C)
Luminaire luminous efficiency	153lm/W-146lm/W
UGR lat./long.	24.6 / 23.8 (43W)



Reference	LED 3900lm/26W 840
ηLB	100 %
Φ ↓/↑	96 % / 4 %
UGR lat./long.	24.6 / 23.8



MECHANICS

Housing colour	light grey
Dimensions (LxWxDxH)	1540mm x 85mm x 78mm
Weight (net)	1.93kg
Cable entry KE	Further cable entries can be broken out at the end face and on the rear
Type of installation	Individual surface mounting, Pendant individual mounting, Wall mounting, Mounting rail installation

Dimensions

L	1540 mm	Length
B	85 mm	Width
H	78 mm	Height
A1	1150 mm	Mounting distance single mounting